



**Water Monitoring Result at WSD9 - Tai Wan
Mid-Flood Tide**

Date	Time	Weater Condition	Sampling Depth		Water Temperature			pH			Salinity			DO Saturation			DO			Turbidity			Suspended Solids	
					°C			-			ppt			%			mg/L			NTU			mg/L	
					Value	Average		Value	Average		Value	Average		Value	Average		Value	Average		Value	Average		Value	Average
28/2/2014	19:20	Cloudy	Middle	3.5	17.80	17.80	17.80	8.35	8.35	8.38	36.44	36.44	36.44	93.6	93.4	93.1	7.13	7.12	7.09	2.21	2.31	2.30	2	2.50
	19:22		Middle	3.5	17.80	17.80	17.80	8.41	8.41	8.38	36.44	36.44	36.44	92.7	92.7	93.1	7.06	7.06	7.09	2.40	2.27	2.30	3	2.50
3/3/2014	18:47	Cloudy	Middle	2.5	17.30	17.30	17.35	8.21	8.21	8.21	33.26	33.26	33.26	82.3	83.1	83.3	6.46	6.52	6.54	3.61	3.54	3.54	4	3.50
	18:48		Middle	2.5	17.40	17.40	17.35	8.21	8.21	8.21	33.26	33.26	33.26	83.9	83.7	83.3	6.59	6.57	6.54	3.51	3.49	3.54	3	3.50
5/3/2014	7:45	Fine	Middle	3.0	17.30	17.30	17.30	8.38	8.38	8.38	36.47	36.47	36.47	81.8	82.1	82.4	6.30	6.33	6.35	4.00	4.00	4.00	4	4.00
	7:47		Middle	3.0	17.30	17.30	17.30	8.38	8.38	8.38	36.47	36.47	36.47	82.7	83.0	82.4	6.37	6.39	6.35	4.01	3.99	4.00	4	4.00
7/3/2014	9:15	Fine	Middle	3.0	16.40	16.40	16.40	8.08	8.08	8.10	33.22	33.22	33.25	92.2	92.5	92.2	7.36	7.40	7.38	4.44	4.44	4.45	3	3.00
	9:17		Middle	3.0	16.40	16.40	16.40	8.12	8.12	8.10	33.28	33.28	33.25	91.7	92.4	92.2	7.34	7.40	7.38	4.45	4.47	4.45	3	3.00
10/3/2014	7:50	Cloudy	Middle	3.0	15.50	15.50	15.50	8.38	8.38	8.38	33.14	33.14	33.14	89.3	89.1	88.9	7.30	7.29	7.27	4.29	4.24	4.21	3	3.00
	7:52		Middle	3.0	15.50	15.50	15.50	8.37	8.37	8.38	33.14	33.14	33.14	89.0	88.3	88.9	7.28	7.22	7.27	4.21	4.10	4.21	3	3.00
12/3/2014	12:30	Cloudy	Middle	3.0	16.90	16.90	16.90	8.16	8.16	8.16	32.71	32.71	32.71	94.7	94.7	94.7	7.52	7.51	7.51	4.79	4.79	4.80	6	5.50
	12:32		Middle	3.0	16.90	16.90	16.90	8.16	8.16	8.16	32.71	32.71	32.71	94.8	94.5	94.7	7.52	7.50	7.51	4.80	4.80	4.80	5	5.50
14/3/2014	14:40	Cloudy	Middle	2.5	17.20	17.20	17.30	7.42	7.42	7.50	35.84	35.84	35.85	82.2	82.8	83.2	6.36	6.40	6.43	3.31	3.31	3.32	4	4.50
	14:42		Middle	2.5	17.40	17.40	17.30	7.58	7.58	7.50	35.86	35.86	35.85	83.4	84.2	83.2	6.44	6.51	6.43	3.30	3.36	3.32	5	4.50
17/3/2014	18:00	Cloudy	Middle	2.5	20.70	20.70	20.70	7.88	7.88	7.89	32.52	32.52	32.52	82.0	82.6	81.8	6.07	6.12	6.06	5.23	5.30	5.21	7	7.50
	18:01		Middle	2.5	20.70	20.70	20.70	7.89	7.90	7.89	32.51	32.51	32.52	81.4	81.0	81.8	6.03	6.00	6.06	5.19	5.11	5.21	8	7.50
19/3/2014	17:55	Cloudy	Middle	2.0	20.90	20.90	20.93	8.02	8.02	8.03	32.58	32.58	32.58	77.7	77.6	76.3	5.72	5.72	5.62	2.81	2.87	2.82	2	2.50
	17:56		Middle	2.0	21.00	20.90	20.93	8.03	8.03	8.03	32.59	32.58	32.58	75.0	74.9	76.3	5.52	5.53	5.62	2.75	2.84	2.82	3	2.50
21/3/2014	19:45	Fine	Middle	2.5	17.00	17.00	17.00	7.96	7.96	7.95	32.50	32.50	32.50	75.3	78.7	77.8	5.98	6.25	6.18	5.55	5.40	5.45	6	5.50
	19:46		Middle	2.5	17.00	17.00	17.00	7.90	7.96	7.95	32.49	32.49	32.50	78.9	78.4	77.8	6.26	6.22	6.18	5.28	5.56	5.45	5	5.50
24/3/2014	9:30	Fine	Middle	2.5	18.00	18.00	18.00	8.14	8.14	8.14	36.10	36.10	36.10	75.8	76.2	76.4	5.79	5.81	5.83	3.76	3.72	3.71	<2	<2
	9:32		Middle	2.5	18.00	18.00	18.00	8.14	8.14	8.14	36.10	36.10	36.10	76.8	76.8	76.4	5.87	5.85	5.83	3.69	3.67	3.71	<2	<2
26/3/2014	11:25	Fine	Middle	3.0	20.70	20.70	20.70	8.12	8.12	8.12	32.68	32.68	32.68	91.1	90.7	90.9	6.74	6.71	6.72	1.68	1.67	1.67	3	3.00
	11:27		Middle	3.0	20.70	20.70	20.70	8.12	8.12	8.12	32.68	32.68	32.68	90.9	90.8	90.9	6.72	6.71	6.72	1.66	1.67	1.67	3	3.00

Remarks:
Single underline denotes exceedance over Action Level.
Double underline denotes exceedance over Limit Level.



**Water Monitoring Result at WSD17 - Quarry Bay
Mid-Flood Tide**

Date	Time	Weater Condition	Sampling Depth		Water Temperature			pH			Salinity		DO Saturation		DO		Turbidity		Suspended Solids					
					°C			-			ppt		%		mg/L		NTU		mg/L					
					Value	Average		Value	Average		Value	Average	Value	Average	Value	Average	Value	Average	Value	Average				
28/2/2014	14:50	Cloudy	Middle	3.0	18.10	18.10	18.15	8.48	8.48	8.48	36.39	36.39	36.40	92.0	91.6	91.9	6.99	6.95	6.98	2.50	2.50	2.48	3	2.50
	14:52		Middle	3.0	18.20	18.20		8.48	8.48		36.40	36.40		92.5	91.5		7.02	6.94		2.50	2.42		2	
3/3/2014	19:48	Cloudy	Middle	3.5	17.30	17.30	17.30	8.26	8.26	8.27	33.43	33.43	33.43	83.8	84.3	83.4	6.53	6.62	6.54	5.15	5.10	5.08	6	5.00
	19:49		Middle	3.5	17.30	17.30		8.27	8.27		33.43	33.43		83.1	82.5		6.53	6.48		5.06	5.01		4	
5/3/2014	9:15	Fine	Middle	3.5	17.40	17.40	17.40	8.55	8.55	8.55	36.52	36.52	36.52	87.6	88.0	88.0	6.71	6.77	6.76	6.49	6.49	6.49	10	11.00
	9:17		Middle	3.5	17.40	17.40		8.55	8.55		36.52	36.52		87.8	88.5		6.76	6.81		6.49	6.47		12	
7/3/2014	10:45	Fine	Middle	3.0	16.30	16.30	16.30	8.29	8.29	8.29	33.22	33.22	33.22	92.1	92.9	92.5	7.39	7.38	7.41	4.15	4.10	4.11	5	5.00
	10:47		Middle	3.0	16.30	16.30		8.29	8.29		33.22	33.22		92.4	92.6		7.42	7.43		4.10	4.09		5	
10/3/2014	9:50	Cloudy	Middle	3.5	15.70	15.70	15.70	8.33	8.33	8.34	33.09	33.09	33.08	91.3	91.2	91.1	7.42	7.42	7.40	5.68	5.73	5.72	7	6.00
	9:52		Middle	3.5	15.70	15.70		8.34	8.34		33.05	33.09		91.4	90.3		7.43	7.34		5.75	5.70		5	
12/3/2014	13:40	Cloudy	Middle	3.0	16.70	16.70	16.70	8.24	8.24	8.25	32.86	32.86	32.86	89.7	89.5	89.9	7.15	7.12	7.15	6.71	6.64	6.64	4	4.50
	13:42		Middle	3.0	16.70	16.70		8.25	8.25		32.86	32.86		90.2	90.0		7.17	7.16		6.60	6.60		5	
14/3/2014	15:50	Cloudy	Middle	3.0	16.60	16.60	16.60	7.98	7.98	7.99	35.88	35.88	35.88	85.9	87.7	87.0	6.79	6.88	6.84	6.49	6.49	6.46	5	6.00
	15:52		Middle	3.0	16.60	16.60		7.99	7.99		35.88	35.88		87.2	87.1		6.84	6.83		6.41	6.43		7	
17/3/2014	19:00	Cloudy	Middle	3.0	20.40	20.40	20.40	8.13	8.13	8.13	32.73	32.70	32.71	81.5	83.1	82.4	5.88	6.17	6.08	6.39	6.02	5.89	10	9.00
	19:01		Middle	3.0	20.40	20.40		8.13	8.13		32.70	32.70		82.2	82.6		6.11	6.14		5.97	5.18		8	
19/3/2014	19:00	Cloudy	Middle	3.0	20.80	20.80	20.85	8.02	8.02	8.02	32.53	32.53	32.53	76.2	77.2	76.3	5.68	5.70	5.65	6.62	6.72	6.29	7	7.00
	19:01		Middle	3.0	20.90	20.90		8.01	8.01		32.52	32.52		76.5	75.3		5.65	5.56		5.94	5.88		7	
21/3/2014	21:15	Fine	Middle	3.5	17.20	17.20	17.20	7.76	7.76	7.77	32.25	32.25	32.25	75.7	76.7	76.7	5.99	6.07	6.07	3.68	3.47	3.61	5	5.00
	21:16		Middle	3.5	17.20	17.20		7.78	7.78		32.25	32.25		77.2	77.0		6.11	6.10		3.70	3.57		5	
24/3/2014	10:25	Fine	Middle	3.5	18.00	18.00	18.10	8.14	8.14	8.14	35.98	35.98	35.98	84.9	84.5	84.6	6.47	6.43	6.44	2.25	2.24	2.24	3	3.50
	10:27		Middle	3.5	18.20	18.20		8.14	8.14		35.98	35.98		84.8	84.3		6.45	6.41		2.24	2.24		4	
26/3/2014	15:40	Fine	Middle	3.0	19.30	19.40	19.48	8.20	8.20	8.21	32.72	32.72	32.72	88.7	88.8	89.3	6.71	6.72	6.75	4.18	4.03	4.06	5	6.00
	15:42		Middle	3.0	19.60	19.60		8.21	8.21		32.72	32.72		89.9	89.7		6.78	6.78		4.00	4.01		7	

Remarks:
Single underline denotes exceedance over Action Level.
Double underline denotes exceedance over Limit Level.



**Water Monitoring Result at C7 - Windsor House
Mid-Flood Tide**

Date	Time	Weater Condition	Sampling Depth		Water Temperature			pH			Salinity		DO Saturation		DO		Turbidity		Suspended Solids					
					°C			-			ppt		%		mg/L		NTU		mg/L					
					Value	Average		Value	Average		Value	Average	Value	Average	Value	Average	Value	Average	Value	Average				
28/2/2014	16:42	Cloudy	Middle	1.5	18.00	18.00	18.00	8.42	8.42	8.42	35.36	35.36	35.36	67.5	68.2	68.3	5.17	5.23	5.23	0.91	0.92	0.95	2	2.50
	16:44		Middle	1.5	18.00	18.00	18.00	8.41	8.41	8.41	35.36	35.36	35.36	68.6	68.8	68.8	5.26	5.27	5.27	0.99	0.99	0.99	3	2.50
3/3/2014	19:15	Cloudy	Middle	1.5	17.30	17.30	17.30	8.11	8.11	8.11	32.62	32.62	32.62	68.0	68.1	68.1	5.36	5.37	5.37	2.27	2.30	2.26	3	2.50
	19:16		Middle	1.5	17.30	17.30	17.30	8.11	8.11	8.11	32.62	32.62	32.62	68.2	68.2	68.2	5.39	5.39	5.39	2.21	2.24	2.24	2	2.50
5/3/2014	11:02	Fine	Middle	1.5	17.40	17.40	17.35	8.36	8.36	8.36	35.52	35.52	35.52	64.2	64.6	64.7	4.98	5.01	5.02	3.50	3.53	3.52	4	3.50
	11:04		Middle	1.5	17.30	17.30	17.35	8.35	8.35	8.35	35.52	35.52	35.52	64.9	65.2	64.7	5.05	5.05	5.05	3.54	3.52	3.52	3	3.50
7/3/2014	12:12	Fine	Middle	1.5	16.80	16.80	16.80	8.20	8.20	8.20	32.86	32.86	32.86	64.5	64.9	64.9	5.13	5.17	5.17	4.43	4.47	4.51	3	3.00
	12:14		Middle	1.5	16.80	16.80	16.80	8.20	8.20	8.20	32.86	32.86	32.86	65.3	65.0	64.9	5.19	5.18	5.17	4.56	4.58	4.51	3	3.00
10/3/2014	11:17	Cloudy	Middle	1.5	16.00	16.00	16.00	8.23	8.23	8.23	32.49	32.49	32.49	70.5	70.6	70.6	5.71	5.72	5.71	3.33	3.32	3.32	3	3.00
	11:19		Middle	1.5	16.00	16.00	16.00	8.23	8.23	8.23	32.49	32.49	32.49	70.6	70.5	70.6	5.72	5.70	5.71	3.31	3.30	3.32	3	3.00
12/3/2014	15:47	Cloudy	Middle	1.5	17.50	17.50	17.50	8.18	8.18	8.18	32.35	32.35	32.35	73.3	73.8	74.2	5.78	5.81	5.85	4.75	4.75	4.75	4	4.00
	15:49		Middle	1.5	17.50	17.50	17.50	8.18	8.18	8.18	32.35	32.35	32.35	74.8	75.0	74.2	5.89	5.90	5.85	4.76	4.75	4.75	4	4.00
14/3/2014	17:45	Cloudy	Middle	1.5	16.70	16.70	16.70	7.91	7.91	7.91	35.17	35.17	35.17	69.6	69.7	69.7	5.47	5.48	5.48	2.15	2.15	2.15	5	6.00
	17:47		Middle	1.5	16.70	16.70	16.70	7.91	7.91	7.91	35.17	35.17	35.17	69.7	69.7	69.7	5.48	5.48	5.48	2.15	2.15	2.15	7	6.00
17/3/2014	18:30	Cloudy	Middle	1.5	20.90	20.90	20.93	7.94	7.94	7.94	31.88	31.88	31.88	66.7	67.5	66.3	4.92	4.98	4.89	1.04	1.09	1.07	6	5.50
	18:31		Middle	1.5	20.90	21.00	20.93	7.94	7.94	7.94	31.88	31.88	31.88	66.2	64.8	66.3	4.89	4.78	4.89	1.07	1.06	1.07	5	5.50
19/3/2014	18:25	Cloudy	Middle	1.0	21.00	21.00	21.00	7.79	7.79	7.79	31.06	31.06	31.06	59.4	59.9	59.4	4.41	4.45	4.41	1.15	1.17	1.11	5	5.00
	18:26		Middle	1.0	21.00	21.00	21.00	7.79	7.79	7.79	31.06	31.06	31.06	59.7	58.4	59.4	4.43	4.33	4.41	1.06	1.04	1.11	5	5.00
21/3/2014	20:47	Fine	Middle	1.0	17.10	17.10	17.10	8.05	8.05	8.04	31.59	31.59	31.59	54.9	55.4	55.4	4.38	4.42	4.42	1.09	1.06	1.11	2	2.00
	20:48		Middle	1.0	17.10	17.10	17.10	8.02	8.02	8.04	31.59	31.59	31.59	55.6	55.5	55.4	4.44	4.43	4.42	1.15	1.12	1.11	2	2.00
24/3/2014	12:17	Fine	Middle	1.5	18.50	18.50	18.55	7.99	7.99	7.99	35.17	35.17	35.17	59.2	59.3	59.4	4.49	4.50	4.50	2.24	2.24	2.24	3	3.50
	12:19		Middle	1.5	18.60	18.60	18.55	7.99	7.99	7.99	35.17	35.17	35.17	59.5	59.5	59.4	4.51	4.51	4.50	2.23	2.23	2.24	4	3.50
26/3/2014	15:07	Fine	Middle	1.5	19.80	19.80	19.90	8.01	8.01	8.01	31.17	31.17	31.18	65.6	65.9	66.0	4.98	5.00	5.00	2.91	2.86	2.87	4	5.00
	15:09		Middle	1.5	20.00	20.00	19.90	8.00	8.00	8.01	31.18	31.18	31.18	66.4	66.0	66.0	5.03	5.00	5.00	2.86	2.85	2.87	6	5.00

Remarks:
Single underline denotes exceedance over Action Level.
Double underline denotes exceedance over Limit Level.



**Water Monitoring Result at C1 - HKCEC Extension
Mid-Flood Tide**

Date	Time	Weather Condition	Sampling Depth		Water Temperature			pH			Salinity		DO Saturation		DO		Turbidity		Suspended Solids					
					°C			-			ppt		%		mg/L		NTU		mg/L					
					Value	Average		Value	Average		Value	Average	Value	Average	Value	Average	Value	Average	Value	Average				
28/2/2014	17:37	Cloudy	Middle	2.5	17.30	17.30	17.35	8.33	8.33	8.33	33.75	33.75	33.76	78.5	78.4	77.6	6.15	6.15	6.08	2.83	2.83	2.81	4	4.50
	17:39		Middle	2.5	17.40	17.40		8.33	8.32		33.77	33.77		77.1	76.4		6.04	5.98		2.80	2.79		5	
3/3/2014	20:34	Cloudy	Middle	3.0	17.20	17.20	17.15	8.32	8.32	8.33	34.13	34.13	34.13	83.0	82.8	82.7	6.53	6.52	6.52	4.45	4.41	4.39	8	8.00
	20:36		Middle	3.0	17.10	17.10		8.33	8.33		34.13	34.13		82.6	82.3		6.51	6.51		4.37	4.33		8	
5/3/2014	10:22	Fine	Middle	2.5	17.60	17.60	17.50	8.35	8.36	8.35	33.98	33.98	33.98	74.3	72.3	73.4	5.80	5.64	5.73	6.01	6.03	6.03	3	3.50
	10:24		Middle	2.5	17.40	17.40		8.35	8.35		33.98	33.98		72.2	74.7		5.63	5.83		6.04	6.04		4	
7/3/2014	10:00	Fine	Middle	3.0	16.70	16.70	16.65	8.38	8.38	8.38	33.42	33.41	33.42	93.1	92.5	92.5	7.63	7.53	7.55	6.22	6.19	6.19	7	7.50
	10:02		Middle	3.0	16.60	16.60		8.38	8.38		33.41	33.42		92.2	92.1		7.51	7.51		6.16	6.17		8	
10/3/2014	10:04	Cloudy	Middle	2.5	15.90	15.90	15.90	8.37	8.37	8.37	33.31	33.31	33.31	90.6	91.5	91.0	7.54	7.78	7.61	3.50	3.57	3.57	6	6.00
	10:06		Middle	2.5	15.90	15.90		8.37	8.37		33.31	33.31		90.8	90.9		7.56	7.57		3.60	3.59		6	
12/3/2014	13:52	Cloudy	Middle	2.5	16.60	16.50	16.68	8.54	8.54	8.52	33.99	33.99	33.99	83.6	83.0	83.9	6.62	6.58	6.65	3.87	3.85	3.88	8	8.00
	13:54		Middle	2.5	16.80	16.80		8.50	8.50		33.99	33.99		84.2	84.7		6.68	6.72		3.90	3.88		8	
14/3/2014	16:51	Cloudy	Middle	2.5	16.60	16.60	16.65	8.35	8.35	8.35	33.51	33.51	33.50	68.1	67.4	67.5	5.41	5.36	5.36	3.70	3.64	3.61	4	5.00
	16:53		Middle	2.5	16.70	16.70		8.34	8.34		33.49	33.49		67.2	67.1		5.34	5.33		3.55	3.54		6	
17/3/2014	19:25	Cloudy	Middle	2.5	17.50	17.50	17.60	8.22	8.22	8.22	33.44	33.44	33.43	71.8	71.3	71.2	5.59	5.56	5.56	5.04	5.03	5.00	8	8.50
	19:27		Middle	2.5	17.70	17.70		8.21	8.21		33.41	33.41		70.9	70.7		5.54	5.53		4.98	4.96		9	
19/3/2014	20:59	Cloudy	Middle	2.5	18.00	18.00	18.05	8.09	8.09	8.09	33.32	33.32	33.32	72.6	72.4	72.3	5.63	5.62	5.61	3.89	3.84	3.83	9	8.50
	21:01		Middle	2.5	18.10	18.10		8.08	8.08		33.32	33.32		72.2	71.8		5.61	5.59		3.81	3.79		8	
21/3/2014	22:04	Fine	Middle	2.5	16.70	16.70	12.50	8.11	8.11	8.11	33.31	33.31	33.32	69.9	69.5	69.3	5.56	5.54	5.53	3.36	3.36	3.32	5	5.00
	22:05		Middle	2.5	0.00	16.60		8.10	8.10		33.32	33.32		69.2	68.7		5.52	5.49		3.31	3.23		5	
24/3/2014	10:17	Fine	Middle	2.5	17.60	17.60	17.60	8.28	8.28	8.28	33.55	33.55	33.55	80.2	82.3	81.1	6.25	6.41	6.32	2.07	2.05	2.06	4	3.50
	10:19		Middle	2.5	17.60	17.60		8.28	8.28		33.55	33.55		81.1	80.6		6.32	6.28		2.06	2.04		3	
26/3/2014	14:16	Fine	Middle	2.5	18.80	18.80	18.80	8.27	8.27	8.27	33.25	33.26	33.26	76.0	77.8	76.3	5.80	5.90	5.82	2.15	2.18	2.18	6	5.50
	14:18		Middle	2.5	18.80	18.80		8.27	8.27		33.25	33.26		76.2	75.2		5.81	5.78		2.19	2.18		5	

Remarks:
Single underline denotes exceedance over Action Level.
Double underline denotes exceedance over Limit Level.



**Water Monitoring Result at P1 - HKCEC Phase I
Mid-Flood Tide**

Date	Time	Weather Condition	Sampling Depth		Water Temperature			pH			Salinity		DO Saturation		DO		Turbidity		Suspended Solids					
					°C			-			ppt		%		mg/L		NTU		mg/L					
					Value	Average		Value	Average		Value	Average	Value	Average	Value	Average	Value	Average	Value	Average				
28/2/2014	18:15	Cloudy	Middle	3.0	17.50	17.50	17.50	8.31	8.31	8.31	33.77	33.77	33.77	76.0	74.3	74.1	5.92	5.79	5.75	2.27	2.26	2.26	3	2.50
	18:17		Middle	3.0	17.50	17.50	17.50	8.30	8.30	8.31	33.77	33.77	33.77	72.8	73.1	74.1	5.67	5.61	5.75	2.26	2.26	2.26	2	2.50
3/3/2014	19:50	Cloudy	Middle	3.0	17.70	17.70	17.65	8.31	8.31	8.31	34.00	34.00	34.02	80.3	80.1	79.9	6.25	6.24	6.23	1.93	1.89	1.87	3	4.00
	19:52		Middle	3.0	17.60	17.60	17.65	8.31	8.31	8.31	34.03	34.03	34.02	79.7	79.5	79.9	6.22	6.21	6.23	1.84	1.81	1.87	5	4.00
5/3/2014	11:00	Fine	Middle	3.0	17.50	17.50	17.50	8.30	8.30	8.31	34.07	34.07	34.04	72.8	72.3	71.8	5.69	5.60	5.60	4.14	4.12	4.18	6	5.50
	11:02		Middle	3.0	17.50	17.50	17.50	8.31	8.31	8.31	34.00	34.00	34.04	71.4	70.6	71.8	5.57	5.52	5.60	4.08	4.37	4.18	5	5.50
7/3/2014	10:35	Fine	Middle	3.0	16.80	16.80	16.80	8.37	8.37	8.37	33.97	33.98	33.98	88.6	87.6	87.8	7.00	6.95	6.97	2.85	2.86	2.88	3	3.00
	10:37		Middle	3.0	16.80	16.80	16.80	8.37	8.37	8.37	33.98	33.97	33.98	87.7	87.4	87.8	6.97	6.94	6.97	2.89	2.90	2.88	3	3.00
10/3/2014	10:44	Cloudy	Middle	2.5	16.20	16.20	16.20	8.37	8.37	8.37	33.85	33.85	33.85	86.5	86.0	85.8	6.94	6.99	6.90	2.49	2.47	2.46	5	4.00
	10:46		Middle	2.5	16.20	16.20	16.20	8.37	8.37	8.37	33.85	33.85	33.85	85.6	85.0	85.8	6.75	6.90	6.90	2.43	2.45	2.46	3	4.00
12/3/2014	14:25	Cloudy	Middle	3.0	16.40	16.40	16.45	8.40	8.40	8.40	33.37	33.37	33.39	83.5	82.4	81.8	6.68	6.60	6.53	2.01	2.00	2.00	3	4.00
	14:27		Middle	3.0	16.50	16.50	16.45	8.39	8.39	8.40	33.40	33.40	33.39	80.7	80.6	81.8	6.43	6.42	6.53	2.00	1.98	2.00	5	4.00
14/3/2014	17:27	Cloudy	Middle	3.0	16.70	16.70	16.70	8.27	8.27	8.27	33.50	33.50	33.53	68.8	67.3	67.0	5.46	5.34	5.32	3.04	3.00	2.98	3	4.00
	17:29		Middle	3.0	16.70	16.70	16.70	8.26	8.26	8.27	33.56	33.56	33.53	66.5	65.4	67.0	5.28	5.19	5.32	2.94	2.92	2.98	5	4.00
17/3/2014	18:24	Cloudy	Middle	2.5	17.90	17.90	18.00	8.31	8.31	8.30	33.56	33.56	33.57	72.7	72.4	72.2	5.63	5.61	5.60	3.94	3.87	3.87	8	8.50
	18:26		Middle	2.5	18.10	18.10	18.00	8.29	8.29	8.30	33.57	33.57	33.57	72.1	71.7	72.2	5.59	5.57	5.60	3.83	3.82	3.87	9	8.50
19/3/2014	20:13	Cloudy	Middle	2.5	18.40	18.40	18.50	8.14	8.14	8.13	33.32	33.32	33.32	75.2	75.0	74.8	5.78	5.77	5.76	8.18	8.14	8.13	13	12.00
	20:15		Middle	2.5	18.60	18.60	18.50	8.12	8.12	8.13	33.32	33.32	33.32	74.7	74.3	74.8	5.75	5.73	5.76	8.11	8.09	8.13	11	12.00
21/3/2014	21:13	Fine	Middle	2.5	17.20	17.20	17.20	8.15	8.15	8.15	33.33	33.33	33.34	73.1	72.8	72.7	5.75	5.73	5.73	2.72	2.68	2.67	3	3.50
	21:15		Middle	2.5	17.20	17.20	17.20	8.14	8.14	8.15	33.34	33.34	33.34	72.6	72.3	72.7	5.72	5.70	5.73	2.64	2.62	2.67	4	3.50
24/3/2014	10:49	Fine	Middle	3.0	17.80	17.80	17.80	8.20	8.20	8.20	33.60	33.60	33.60	80.3	80.4	80.9	6.24	6.24	6.28	2.81	2.82	2.81	3	3.00
	10:51		Middle	3.0	17.80	17.80	17.80	8.20	8.20	8.20	33.60	33.60	33.60	81.5	81.2	80.9	6.32	6.31	6.28	2.80	2.81	2.81	3	3.00
26/3/2014	14:51	Fine	Middle	3.0	19.50	19.50	19.50	8.14	8.14	8.14	33.25	33.25	33.25	77.3	78.2	77.8	5.85	5.95	5.89	3.05	3.06	3.04	4	4.00
	14:53		Middle	3.0	19.50	19.50	19.50	8.14	8.14	8.14	33.25	33.25	33.25	78.0	77.5	77.8	5.90	5.86	5.89	3.02	3.03	3.04	4	4.00

Remarks:
Single underline denotes exceedance over Action Level.
Double underline denotes exceedance over Limit Level.



**Water Monitoring Result at P3 - APA
Mid-Flood Tide**

Date	Time	Weather Condition	Sampling Depth		Water Temperature			pH			Salinity		DO Saturation		DO		Turbidity		Suspended Solids					
					°C			-			ppt		%		mg/L		NTU		mg/L					
					Value	Average		Value	Average		Value	Average	Value	Average	Value	Average	Value	Average	Value	Average				
28/2/2014	18:05	Cloudy	Middle	3.0	17.20	17.20	17.20	8.32	8.32	8.32	33.78	33.78	33.78	69.1	68.3	68.2	5.42	5.38	5.36	2.47	2.47	2.48	3	2.50
	18:07		Middle	3.0	17.20	17.20	17.20	8.31	8.31	8.31	33.77	33.77	33.77	67.9	67.4	67.4	5.33	5.29	5.29	2.48	2.49	2.49	2	
3/3/2014	20:08	Cloudy	Middle	3.0	17.30	17.30	17.25	8.30	8.30	8.30	34.02	34.02	34.02	80.2	79.8	79.6	6.28	6.26	6.25	2.87	2.86	2.84	5	5.50
	20:10		Middle	3.0	17.20	17.20	17.25	8.30	8.30	8.30	34.02	34.02	34.02	79.4	79.1	79.1	6.24	6.22	6.22	2.83	2.79	2.79	6	
5/3/2014	10:52	Fine	Middle	3.0	17.40	17.40	17.35	8.31	8.31	8.31	33.79	33.82	33.80	73.7	73.7	74.0	5.77	5.76	5.80	3.96	3.97	3.90	5	6.00
	10:54		Middle	3.0	17.30	17.30	17.35	8.31	8.31	8.31	33.80	33.80	33.80	74.2	74.5	74.5	5.81	5.84	5.84	3.87	3.78	3.78	7	
7/3/2014	10:26	Fine	Middle	3.0	16.70	16.70	16.70	8.39	8.39	8.39	33.61	33.62	33.62	90.7	91.0	90.0	7.30	7.32	7.21	4.44	4.46	4.34	5	5.50
	10:28		Middle	3.0	16.70	16.70	16.70	8.39	8.39	8.39	33.62	33.61	33.61	89.5	88.6	88.6	7.15	7.07	7.07	4.24	4.23	4.23	6	
10/3/2014	10:37	Cloudy	Middle	2.5	15.80	15.80	15.80	8.38	8.38	8.38	28.42	28.42	28.42	91.5	91.4	91.6	7.38	7.37	7.39	3.45	3.42	3.43	5	4.50
	10:39		Middle	2.5	15.80	15.80	15.80	8.38	8.38	8.38	28.42	28.42	28.42	91.6	91.8	91.8	7.39	7.40	7.40	3.41	3.43	3.43	4	
12/3/2014	14:17	Cloudy	Middle	3.0	16.40	16.40	16.40	8.41	8.41	8.41	33.59	33.59	33.59	80.7	80.2	79.3	6.44	6.38	6.32	2.33	2.34	2.34	4	4.00
	14:19		Middle	3.0	16.40	16.40	16.40	8.40	8.40	8.40	33.59	33.59	33.59	78.5	77.8	77.8	6.26	6.21	6.21	2.35	2.34	2.34	4	
14/3/2014	17:20	Cloudy	Middle	2.5	16.40	16.50	16.43	8.26	8.26	8.27	35.95	35.95	35.96	64.5	64.2	64.2	5.06	5.04	5.04	3.30	3.30	3.31	8	7.00
	17:22		Middle	2.5	16.40	16.40	16.43	8.27	8.27	8.27	35.97	35.97	35.97	64.0	63.9	63.9	5.03	5.01	5.01	3.31	3.32	3.32	6	
17/3/2014	18:35	Cloudy	Middle	2.5	17.40	17.40	17.50	8.27	8.27	8.26	33.45	33.45	33.43	69.6	69.4	69.2	5.48	5.47	5.46	3.37	3.36	3.33	6	6.00
	18:37		Middle	2.5	17.60	17.60	17.50	8.24	8.24	8.24	33.41	33.41	33.41	69.1	68.8	68.8	5.45	5.43	5.43	3.33	3.26	3.26	6	
19/3/2014	20:28	Cloudy	Middle	2.5	18.10	18.10	18.15	8.12	8.12	8.12	33.29	33.29	33.29	74.5	74.1	74.0	5.76	5.74	5.74	4.84	4.79	4.76	6	5.00
	20:30		Middle	2.5	18.20	18.20	18.15	8.11	8.11	8.11	33.28	33.28	33.28	73.8	73.7	73.7	5.72	5.72	5.72	4.73	4.69	4.69	4	
21/3/2014	21:24	Fine	Middle	2.5	17.00	17.00	16.90	8.13	8.13	8.13	33.32	33.32	33.32	72.2	72.0	71.9	5.72	5.70	5.69	4.59	4.62	4.56	4	4.00
	21:26		Middle	2.5	16.80	16.80	16.90	8.13	8.13	8.13	33.32	33.32	33.32	71.7	71.5	71.5	5.68	5.67	5.67	4.53	4.48	4.48	4	
24/3/2014	10:42	Fine	Middle	3.0	17.20	17.20	17.20	8.22	8.22	8.22	33.60	33.60	33.60	78.1	80.1	79.9	6.14	6.29	6.28	3.21	3.23	3.22	6	5.00
	10:44		Middle	3.0	17.20	17.20	17.20	8.22	8.22	8.22	33.60	33.60	33.60	81.0	80.4	80.4	6.36	6.32	6.32	3.24	3.20	3.20	4	
26/3/2014	14:43	Fine	Middle	3.0	19.40	19.40	19.40	8.16	8.16	8.16	33.25	33.25	33.25	76.8	76.4	76.5	5.78	5.74	5.75	2.27	2.28	2.28	4	3.50
	14:45		Middle	3.0	19.40	19.40	19.40	8.16	8.16	8.16	33.25	33.25	33.25	76.2	76.4	76.4	5.73	5.74	5.74	2.28	2.27	2.27	3	

Remarks:
Single underline denotes exceedance over Action Level.
Double underline denotes exceedance over Limit Level.



**Water Monitoring Result at P4 - SOC
Mid-Flood Tide**

Date	Time	Weater Condition	Sampling Depth		Water Temperature			pH			Salinity		DO Saturation		DO		Turbidity		Suspended Solids					
					°C			-			ppt		%		mg/L		NTU		mg/L					
					Value	Average		Value	Average		Value	Average	Value	Average	Value	Average	Value	Average	Value	Average				
28/2/2014	17:54	Cloudy	Middle	3.0	17.30	17.30	17.25	8.31	8.31	8.31	33.91	33.91	33.92	77.1	76.4	75.7	6.03	5.99	5.93	3.32	3.36	3.33	4	4.00
	17:56		Middle	3.0	17.20	17.20		8.31	8.31		33.92	33.92		75.1	74.0		5.89	5.80		3.33	3.31		4	
3/3/2014	20:19	Cloudy	Middle	3.0	17.60	17.60	17.55	8.30	8.30	8.30	33.98	33.98	33.98	79.5	79.2	79.2	6.19	6.17	6.17	1.73	1.69	1.68	4	3.50
	20:21		Middle	3.0	17.50	17.50		8.30	8.30		33.98	33.98		79.1	78.9		6.17	6.15		1.67	1.62		3	
5/3/2014	10:40	Fine	Middle	3.0	17.30	17.30	17.30	8.32	8.32	8.32	33.60	33.60	33.61	71.9	70.1	70.4	5.63	5.49	5.51	2.99	2.93	2.95	5	6.00
	10:42		Middle	3.0	17.30	17.30		8.31	8.31		33.62	33.62		69.3	70.3		5.42	5.50		2.93	2.93		7	
7/3/2014	10:17	Fine	Middle	3.0	16.60	16.60	16.60	8.40	8.40	8.40	34.08	34.08	34.08	90.0	89.8	90.1	7.14	7.12	7.15	5.30	5.39	5.36	6	6.00
	10:19		Middle	3.0	16.60	16.60		8.40	8.40		34.08	34.08		90.2	90.2		7.16	7.16		5.37	5.36		6	
10/3/2014	10:27	Cloudy	Middle	2.5	15.80	15.80	15.80	8.38	8.38	8.38	33.19	33.19	33.19	89.4	91.0	90.8	7.34	7.42	7.40	3.73	3.73	3.73	4	4.50
	10:29		Middle	2.5	15.80	15.80		8.38	8.38		33.19	33.19		92.1	90.5		7.46	7.37		3.73	3.73		5	
12/3/2014	14:07	Cloudy	Middle	2.5	16.40	16.40	16.45	8.43	8.43	8.42	33.59	33.59	33.59	84.4	82.0	82.2	6.71	6.52	6.54	3.51	3.40	3.44	6	5.00
	14:09		Middle	2.5	16.50	16.50		8.41	8.41		33.59	33.60		81.2	81.1		6.47	6.45		3.37	3.47		4	
14/3/2014	17:07	Cloudy	Middle	2.5	16.40	16.40	16.40	8.28	8.28	8.28	33.34	33.34	33.35	70.9	70.3	69.3	5.67	5.62	5.54	3.38	3.40	3.41	4	4.50
	17:09		Middle	2.5	16.40	16.40		8.28	8.28		33.35	33.35		68.7	67.2		5.49	5.37		3.44	3.42		5	
17/3/2014	18:49	Cloudy	Middle	2.5	17.40	17.40	17.50	8.24	8.24	8.24	33.47	33.47	33.45	68.0	67.9	67.7	5.33	5.33	5.32	3.69	3.62	3.61	9	8.00
	18:51		Middle	2.5	17.60	17.60		8.23	8.23		33.42	33.42		67.7	67.3		5.32	5.30		3.57	3.55		7	
19/3/2014	20:41	Cloudy	Middle	2.5	18.00	18.00	18.00	8.10	8.10	8.10	33.29	33.29	33.29	73.1	72.8	72.6	5.67	5.65	5.64	4.18	4.20	4.16	6	6.00
	20:43		Middle	2.5	18.00	18.00		8.10	8.10		33.29	33.29		72.5	72.1		5.63	5.61		4.14	4.10		6	
21/3/2014	21:37	Fine	Middle	2.5	16.90	16.90	16.85	8.12	8.12	8.12	33.31	33.31	33.30	71.5	71.2	71.1	5.66	5.64	5.64	3.33	3.29	3.27	4	4.00
	21:39		Middle	2.5	16.80	16.80		8.12	8.12		33.29	33.29		71.1	70.7		5.63	5.61		3.25	3.22		4	
24/3/2014	10:32	Fine	Middle	3.0	17.40	17.40	17.40	8.23	8.23	8.23	33.62	33.62	33.62	81.2	82.9	82.2	6.37	6.51	6.47	3.40	3.37	3.39	7	6.00
	10:34		Middle	3.0	17.40	17.40		8.23	8.23		33.62	33.62		81.6	83.2		6.39	6.61		3.41	3.37		5	
26/3/2014	14:33	Fine	Middle	2.5	19.10	19.10	19.10	8.19	8.19	8.19	33.24	33.24	33.24	75.7	76.2	75.8	5.76	5.77	5.75	3.08	3.10	3.09	4	3.50
	14:35		Middle	2.5	19.10	19.10		8.19	8.19		33.24	33.24		75.8	75.4		5.76	5.69		3.07	3.09		3	

Remarks:
 Single underline denotes exceedance over Action Level.
 Double underline denotes exceedance over Limit Level.



**Water Monitoring Result at P5 - WCT / RT / IT
Mid-Flood Tide**

Date	Time	Weather Condition	Sampling Depth		Water Temperature			pH			Salinity		DO Saturation		DO		Turbidity		Suspended Solids					
					°C			-			ppt		%		mg/L		NTU		mg/L					
					Value	Average		Value	Average		Value	Average	Value	Average	Value	Average	Value	Average	Value	Average				
28/2/2014	17:50	Cloudy	Middle	3.0	17.20	17.20	17.25	8.33	8.33	8.33	33.85	33.85	33.84	80.5	79.9	78.8	6.30	6.27	6.17	4.66	4.63	4.60	5	4.00
	17:52		Middle	3.0	17.30	17.30		8.32	8.32		33.83	33.83		77.9	76.7		6.11	6.01		4.61	4.50		3	
3/3/2014	20:29	Cloudy	Middle	3.0	17.40	17.40	17.40	8.29	8.29	8.30	33.86	33.86	33.86	80.9	80.5	80.5	6.40	6.30	6.36	2.11	2.03	2.03	6	5.00
	20:31		Middle	3.0	17.40	17.40		8.31	8.31		33.86	33.86		80.3	80.2		6.36	6.36		2.01	1.97		4	
5/3/2014	10:35	Fine	Middle	3.0	17.30	17.30	17.30	8.34	8.34	8.34	33.90	33.90	33.91	72.5	73.6	73.5	5.68	5.78	5.76	4.72	4.71	4.71	6	6.50
	10:37		Middle	3.0	17.30	17.30		8.34	8.34		33.92	33.92		74.0	74.0		5.79	5.79		4.71	4.71		7	
7/3/2014	10:10	Fine	Middle	3.0	16.50	16.50	16.50	8.39	8.39	8.39	33.31	33.31	33.31	94.2	94.5	94.4	7.63	7.72	7.68	6.34	6.28	6.31	9	8.50
	10:12		Middle	3.0	16.50	16.50		8.39	8.39		33.31	33.31		94.3	94.4		7.66	7.70		6.33	6.29		8	
10/3/2014	10:21	Cloudy	Middle	2.5	15.90	15.90	15.90	8.37	8.37	8.37	34.04	34.04	34.04	97.6	95.6	95.2	7.89	7.78	7.71	3.77	3.78	3.79	5	5.00
	10:23		Middle	2.5	15.90	15.90		8.37	8.37		34.04	34.04		94.2	93.4		7.64	7.54		3.80	3.79		5	
12/3/2014	14:02	Cloudy	Middle	2.5	16.50	16.50	16.55	8.46	8.46	8.45	33.68	33.68	33.68	76.1	78.5	77.4	6.05	6.26	6.16	2.92	2.94	2.97	6	5.00
	14:04		Middle	2.5	16.60	16.60		8.44	8.44		33.68	33.68		77.7	77.4		6.18	6.15		2.98	3.02		4	
14/3/2014	17:02	Cloudy	Middle	2.5	16.40	16.40	16.35	8.31	8.31	8.31	33.43	33.43	33.44	68.9	68.5	67.9	5.51	5.48	5.43	4.53	4.48	4.46	6	6.50
	17:04		Middle	2.5	16.30	16.30		8.31	8.31		33.44	33.44		67.6	66.7		5.40	5.33		4.42	4.39		7	
17/3/2014	19:08	Cloudy	Middle	2.5	17.40	17.40	17.55	8.23	8.23	8.23	33.44	33.44	33.43	67.8	67.5	67.4	5.29	5.27	5.26	3.80	3.79	3.75	8	8.50
	19:10		Middle	2.5	17.70	17.70		8.22	8.22		33.41	33.41		67.2	66.9		5.25	5.23		3.73	3.68		9	
19/3/2014	20:53	Cloudy	Middle	2.5	18.00	18.00	18.05	8.09	8.09	8.09	33.30	33.30	33.30	74.1	73.8	73.7	5.75	5.73	5.73	3.40	3.39	3.37	6	5.50
	20:55		Middle	2.5	18.10	18.10		8.09	8.09		33.30	33.30		73.6	73.3		5.72	5.70		3.36	3.32		5	
21/3/2014	21:53	Fine	Middle	2.5	16.80	16.80	16.75	8.11	8.11	8.11	33.29	33.29	33.29	76.9	76.6	76.5	6.11	6.09	6.08	4.47	4.44	4.43	6	6.00
	21:55		Middle	2.5	16.70	16.70		8.11	8.11		33.29	33.29		76.3	76.1		6.07	6.06		4.41	4.39		6	
24/3/2014	10:26	Fine	Middle	3.0	17.60	17.60	17.60	8.22	8.22	8.23	33.63	33.64	33.64	85.4	85.7	84.9	6.66	6.69	6.62	4.49	4.50	4.50	6	5.50
	10:28		Middle	3.0	17.60	17.60		8.23	8.23		33.63	33.64		84.5	84.1		6.57	6.56		4.51	4.50		5	
26/3/2014	14:27	Fine	Middle	2.5	19.00	19.00	19.00	8.22	8.22	8.22	33.25	33.24	33.25	78.1	78.7	78.3	5.92	5.97	5.94	2.71	2.69	2.70	5	6.00
	14:29		Middle	2.5	19.00	19.00		8.22	8.22		33.25	33.24		78.6	77.9		5.96	5.91		2.70	2.69		7	

Remarks:
Single underline denotes exceedance over Action Level.
Double underline denotes exceedance over Limit Level.



**Water Monitoring Result at RW21-P789 - Sun Hung Kai Centre
Mid-Flood Tide**

Date	Time	Weater Condition	Sampling Depth		Water Temperature			pH			Salinity		DO Saturation		DO		Turbidity		Suspended Solids					
					°C		-		ppt		%		mg/L		NTU		mg/L							
			m	Value	Average	Value	Average	Value	Average	Value	Average	Value	Average	Value	Average	Value	Average	Value	Average					
28/2/2014	15:55	Cloudy	Middle	4.0	17.50	17.50	17.55	8.45	8.45	8.46	35.96	35.96	35.96	83.2	82.1	82.7	6.40	6.32	6.36	2.66	2.66	2.66	3	3.00
	15:57		Middle	4.0	17.60	17.60		8.46	8.46		35.96	35.96		82.5	82.8		6.35	6.38		2.67	2.66		3	
3/3/2014	20:36	Cloudy	Middle	3.5	17.30	17.30	17.30	8.13	8.13	8.13	33.04	33.04	33.05	74.5	75.8	75.4	5.86	5.96	5.93	6.68	6.22	6.27	5	5.00
	20:37		Middle	3.5	17.30	17.30		8.13	8.13		33.06	33.06		75.8	75.5		5.96	5.94		6.06	6.13		5	
5/3/2014	10:25	Fine	Middle	4.0	17.40	17.40	17.40	8.42	8.42	8.43	36.17	36.17	36.17	84.1	84.8	84.0	6.48	6.53	6.47	7.01	7.20	7.11	3	3.50
	10:27		Middle	4.0	17.40	17.40		8.43	8.43		36.17	36.17		83.3	83.9		6.42	6.46		7.21	7.01		4	
7/3/2014	11:33	Fine	Middle	4.0	16.50	16.50	16.50	8.22	8.22	8.24	33.22	33.22	33.22	87.9	87.9	87.8	7.02	7.02	7.02	8.41	8.22	8.26	8	8.50
	11:35		Middle	4.0	16.50	16.50		8.25	8.25		33.22	33.22		87.9	87.5		7.02	7.00		8.21	8.20		9	
10/3/2014	10:45	Cloudy	Middle	3.5	15.90	15.90	15.85	8.26	8.26	8.27	33.02	33.02	33.03	91.2	90.1	89.9	7.38	7.29	7.27	8.00	8.00	8.00	4	4.50
	10:47		Middle	3.5	15.80	15.80		8.27	8.27		33.03	33.03		89.2	89.0		7.22	7.20		8.00	8.01		5	
12/3/2014	15:05	Cloudy	Middle	4.0	17.20	17.20	17.35	8.20	8.20	8.21	32.62	32.62	32.63	87.7	87.8	87.5	6.90	6.90	6.88	5.76	5.78	5.78	4	3.50
	15:07		Middle	4.0	17.50	17.50		8.21	8.21		32.64	32.64		87.4	87.1		6.87	6.85		5.79	5.80		3	
14/3/2014	15:00	Cloudy	Middle	4.0	16.80	16.80	16.90	7.87	7.87	7.89	35.83	35.83	35.83	85.1	84.7	84.6	6.64	6.61	6.60	7.61	7.52	7.51	9	9.50
	15:02		Middle	4.0	17.00	17.00		7.90	7.90		35.83	35.83		84.3	84.3		6.58	6.57		7.51	7.41		10	
17/3/2014	19:47	Cloudy	Middle	3.0	20.80	20.80	20.85	8.01	8.01	8.01	32.63	32.63	32.63	79.8	80.8	79.8	5.90	5.96	5.88	7.84	7.97	7.71	10	10.00
	19:48		Middle	3.0	20.90	20.90		8.01	8.01		32.63	32.63		80.0	78.4		5.88	5.76		7.40	7.63		10	
19/3/2014	19:48	Cloudy	Middle	3.5	20.60	20.60	20.60	7.97	7.96	7.96	32.40	32.40	32.40	75.6	76.0	74.1	5.63	5.64	5.51	6.32	5.93	6.04	6	7.00
	19:49		Middle	3.5	20.60	20.60		7.96	7.96		32.40	32.40		72.9	72.0		5.41	5.34		6.01	5.88		8	
21/3/2014	20:15	Fine	Middle	3.5	17.20	17.20	17.20	8.04	8.04	8.04	32.43	32.43	32.43	74.7	74.9	76.0	5.90	5.96	6.02	6.31	6.22	6.21	4	5.00
	20:16		Middle	3.5	17.20	17.20		8.03	8.03		32.43	32.43		77.1	77.3		6.10	6.11		6.10	6.19		6	
24/3/2014	11:40	Fine	Middle	4.0	18.70	18.70	18.80	8.11	8.11	8.11	35.73	35.73	35.73	75.4	75.5	75.6	5.68	5.69	5.70	4.84	4.84	4.85	3	3.50
	11:42		Middle	4.0	18.90	18.90		8.11	8.11		35.73	35.73		75.7	75.9		5.70	5.71		4.85	4.88		4	
26/3/2014	14:35	Fine	Middle	4.0	19.80	19.80	20.00	8.02	8.02	8.00	31.73	31.73	32.01	80.2	81.1	80.8	6.03	6.09	6.07	3.01	3.00	3.06	6	5.00
	14:37		Middle	4.0	20.20	20.20		7.98	7.98		32.28	32.28		80.9	81.0		6.07	6.08		3.11	3.11		4	

Remarks:
Single underline denotes exceedance over Action Level.
Double underline denotes exceedance over Limit Level.

Monitoring station WSD21 was relocated to the monitoring station RW-P789 since 06 March 2014



**Water Monitoring Result at WSD21 - Wan Chai
Mid-Flood Tide**

Date	Time	Weater Condition	Sampling Depth		Water Temperature			pH			Salinity			DO Saturation			DO			Turbidity			Suspended Solids	
					°C			-			ppt			%			mg/L			NTU			mg/L	
					Value	Average		Value	Average		Value	Average		Value	Average		Value	Average		Value	Average		Value	Average
28/2/2014	17:12	Cloudy	Middle	1.5	17.90	17.90	17.90	8.33	8.33	8.33	33.32	33.32	33.33	74.0	72.7	72.5	5.81	5.63	5.64	4.47	4.45	4.42	5	6.00
	17:14		Middle	1.5	17.90	17.90	17.90	8.33	8.33	8.33	33.32	33.34	33.33	72.2	71.0	71.0	5.60	5.51	5.51	4.43	4.34	4.34	7	
3/3/2014	21:03	Cloudy	Middle	2.0	17.40	17.40	17.35	8.32	8.32	8.32	33.92	33.92	33.92	76.6	76.4	76.2	5.98	5.97	5.96	4.53	4.49	4.48	7	6.50
	21:05		Middle	2.0	17.30	17.30	17.30	8.32	8.32	8.32	33.91	33.91	33.91	76.1	75.8	75.8	5.95	5.93	5.93	4.47	4.41	4.41	6	
5/3/2014	9:57	Fine	Middle	1.5	17.80	17.80	17.80	8.48	8.48	8.45	33.70	33.70	33.71	72.4	71.4	71.3	5.61	5.54	5.53	3.43	3.33	3.34	4	4.00
	9:59		Middle	1.5	17.80	17.80	17.80	8.42	8.42	8.42	33.71	33.71	33.71	71.2	70.1	70.1	5.53	5.44	5.44	3.31	3.30	3.30	4	
7/3/2014	9:34	Fine	Middle	2.0	17.30	17.30	17.30	8.48	8.48	8.48	33.31	33.31	33.31	72.6	73.4	73.0	5.78	5.88	5.81	2.16	2.17	2.18	<2	<2
	9:36		Middle	2.0	17.30	17.30	17.30	8.48	8.48	8.48	33.31	33.31	33.31	73.3	72.6	72.6	5.80	5.77	5.77	2.20	2.19	2.19	<2	
10/3/2014	9:40	Cloudy	Middle	1.5	16.50	16.50	16.50	8.57	8.56	8.57	31.45	31.45	31.45	78.3	78.0	78.1	6.42	6.35	6.43	3.53	3.58	3.56	4	4.00
	9:42		Middle	1.5	16.50	16.50	16.50	8.57	8.56	8.56	31.45	31.45	31.45	79.0	77.2	77.2	6.61	6.32	6.32	3.54	3.59	3.59	4	

Remarks:
 Single underline denotes exceedance over Action Level.
 Double underline denotes exceedance over Limit Level.

Monitoring station WSD21 was relocated to the monitoring station RW-P789 since 06 March 2014



**Water Monitoring Result at WSD19 - Sheung Wan
Mid-Flood Tide**

Date	Time	Weater Condition	Sampling Depth		Water Temperature			pH			Salinity		DO Saturation		DO		Turbidity		Suspended Solids					
					°C		-		ppt		%		mg/L		NTU		mg/L							
			m	Value	Average	Value	Average	Value	Average	Value	Average	Value	Average	Value	Average	Value	Average	Value	Average					
28/2/2014	15:30	Cloudy	Middle	3.5	18.00	18.00	18.05	8.46	8.46	8.46	36.04	36.04	36.04	83.0	82.7	82.4	6.33	6.30	6.28	5.29	5.12	5.05	4	5.00
	15:32		Middle	3.5	18.10	18.10		8.46	8.46		36.04	36.04		82.2	81.6		6.26	6.22		4.90	4.90		6	
3/3/2014	21:30	Cloudy	Middle	2.0	17.40	17.40	17.40	8.00	8.00	8.00	32.80	32.80	32.80	81.5	82.2	81.3	6.40	6.46	6.39	5.35	5.08	5.31	6	6.00
	21:31		Middle	2.0	17.40	17.40		8.00	8.00		32.80	32.80		80.0	81.6		6.29	6.41		5.37	5.42		6	
5/3/2014	9:50	Fine	Middle	3.5	17.60	17.60	17.60	8.47	8.47	8.47	36.03	36.03	36.03	76.5	76.1	75.8	5.88	5.86	5.83	5.79	5.61	5.64	4	3.50
	9:52		Middle	3.5	17.60	17.60		8.47	8.47		36.03	36.03		76.0	74.7		5.84	5.74		5.59	5.58		3	
7/3/2014	11:25	Fine	Middle	3.5	16.50	16.50	16.50	8.23	8.23	8.23	32.65	32.65	32.65	81.8	81.9	81.8	6.57	6.58	6.57	7.01	7.01	7.01	3	3.00
	11:27		Middle	3.5	16.50	16.50		8.23	8.23		32.65	32.65		82.0	81.4		6.59	6.54		7.01	7.01		3	
10/3/2014	10:25	Cloudy	Middle	3.5	15.80	15.80	15.80	8.28	8.28	8.28	32.98	32.98	32.98	83.1	82.7	82.8	6.74	6.72	6.72	5.69	5.60	5.68	5	6.00
	10:27		Middle	3.5	15.80	15.80		8.28	8.28		32.98	32.98		82.6	82.8		6.71	6.72		5.71	5.73		7	
12/3/2014	14:40	Cloudy	Middle	3.5	18.10	18.10	18.20	8.17	8.17	8.18	32.83	32.83	32.83	89.9	90.3	90.1	6.96	6.99	6.98	6.09	6.09	6.08	8	8.50
	14:42		Middle	3.5	18.30	18.30		8.19	8.19		32.82	32.82		90.1	89.9		6.99	6.97		6.07	6.06		9	
14/3/2014	16:25	Cloudy	Middle	3.5	17.20	17.20	17.25	7.92	7.93	7.93	35.83	35.83	35.87	82.4	84.6	84.4	6.38	6.54	6.53	6.44	6.43	6.40	7	7.50
	16:27		Middle	3.5	17.30	17.30		7.93	7.93		35.90	35.90		85.4	85.2		6.61	6.60		6.40	6.33		8	
17/3/2014	20:30	Cloudy	Middle	2.0	20.50	20.50	20.55	8.03	8.03	8.03	32.62	32.61	32.61	75.3	73.9	74.6	5.65	5.49	5.55	6.15	6.05	5.99	12	12.00
	20:31		Middle	2.0	20.60	20.60		8.03	8.03		32.61	32.61		74.1	74.9		5.50	5.55		5.96	5.79		12	
19/3/2014	21:17	Cloudy	Middle	2.0	20.60	20.60	20.60	7.83	7.83	7.84	32.46	32.46	32.46	71.3	71.0	71.1	5.29	5.26	5.27	7.60	7.71	7.57	8	8.00
	21:18		Middle	2.0	20.60	20.60		7.84	7.84		32.45	32.45		71.1	71.0		5.27	5.26		7.62	7.35		8	
21/3/2014	22:26	Fine	Middle	2.0	17.20	17.20	17.20	7.94	7.94	7.94	32.42	32.42	32.42	75.5	75.6	75.1	5.97	5.98	5.94	6.48	6.50	6.43	8	7.50
	22:27		Middle	2.0	17.20	17.20		7.94	7.94		32.42	32.42		74.6	74.7		5.90	5.91		6.33	6.42		7	
24/3/2014	11:24	Fine	Middle	4.0	19.20	19.20	19.30	8.09	8.09	8.09	35.89	35.89	35.87	75.6	74.6	74.7	5.64	5.57	5.57	4.16	4.39	4.29	3	4.00
	11:26		Middle	4.0	19.40	19.40		8.09	8.09		35.84	35.84		74.4	74.0		5.55	5.52		4.31	4.29		5	
26/3/2014	14:00	Fine	Middle	3.5	21.60	21.60	21.90	8.18	8.18	8.14	31.63	31.63	31.67	88.0	86.8	86.5	6.39	6.30	6.27	3.89	3.91	3.92	6	6.00
	14:02		Middle	3.5	22.20	22.20		8.10	8.10		31.70	31.70		86.1	85.0		6.24	6.16		3.94	3.95		6	

Remarks:
Single underline denotes exceedance over Action Level.
Double underline denotes exceedance over Limit Level.



**Water Monitoring Result at WSD9 - Tai Wan
Mid-Ebb Tide**

Date	Time	Weather Condition	Sampling Depth		Water Temperature			pH			Salinity		DO Saturation		DO		Turbidity		Suspended Solids					
					°C			-			ppt		%		mg/L		NTU		mg/L					
			m	Value	Average	Value	Average	Value	Average	Value	Average	Value	Average	Value	Average	Value	Average	Value	Average					
28/2/2014	9:45	Cloudy	Middle	3.0	17.40	17.40	17.40	8.35	8.35	8.35	36.15	36.15	36.15	79.6	79.0	78.5	6.13	6.08	6.05	1.60	1.58	1.57	3	3.00
	9:47		Middle	3.0	17.40	17.40	17.40	8.35	8.35	8.35	36.15	36.15	36.15	78.2	77.2	78.5	6.05	5.93	6.05	1.56	1.54	1.57	3	
3/3/2014	11:30	Cloudy	Middle	3.0	17.10	17.10	17.10	8.46	8.46	8.46	36.67	36.67	36.67	89.4	89.3	89.6	6.60	6.60	6.62	3.41	3.42	3.43	3	3.00
	11:32		Middle	3.0	17.10	17.10	17.10	8.46	8.46	8.46	36.67	36.67	36.67	89.9	89.9	89.6	6.64	6.64	6.62	3.43	3.44	3.43	3	
5/3/2014	16:20	Cloudy	Middle	3.0	17.80	17.80	17.80	8.40	8.40	8.40	36.36	36.36	36.36	81.9	81.9	81.7	6.19	6.19	6.18	4.54	4.57	4.56	5	6.00
	16:22		Middle	3.0	17.80	17.80	17.80	8.40	8.40	8.40	36.36	36.36	36.36	81.6	81.5	81.7	6.17	6.16	6.18	4.57	4.56	4.56	7	
7/3/2014	17:00	Fine	Middle	3.0	16.70	16.70	16.70	8.31	8.31	8.31	32.96	32.96	32.96	92.4	92.6	92.5	7.38	7.39	7.39	5.41	5.43	5.43	4	4.50
	17:02		Middle	3.0	16.70	16.70	16.70	8.31	8.31	8.31	32.96	32.96	32.96	92.5	92.5	92.5	7.39	7.39	7.39	5.43	5.44	5.43	5	
10/3/2014	22:25	Cloudy	Middle	2.0	15.70	15.70	15.70	8.06	8.06	8.06	35.63	35.63	35.63	96.2	95.0	94.6	7.69	7.60	7.56	2.09	2.11	2.10	2	2.00
	22:26		Middle	2.0	15.70	15.70	15.70	8.05	8.05	8.06	35.62	35.62	35.63	94.0	93.0	94.6	7.52	7.44	7.56	2.07	2.13	2.10	2	
12/3/2014	21:45	Cloudy	Middle	2.0	18.10	18.10	18.10	8.04	8.04	8.05	32.70	32.70	32.71	84.1	83.9	83.7	6.53	6.52	6.50	2.43	2.71	2.50	3	3.00
	21:46		Middle	2.0	18.10	18.10	18.10	8.06	8.06	8.05	32.71	32.71	32.71	83.9	83.0	83.7	6.52	6.44	6.50	2.41	2.45	2.50	3	
14/3/2014	22:47	Cloudy	Middle	2.5	16.00	16.00	16.00	7.81	7.81	7.84	32.45	32.45	32.47	85.4	85.7	85.2	6.92	6.96	6.90	2.22	2.09	2.13	4	3.50
	22:48		Middle	2.5	16.00	16.00	16.00	7.86	7.86	7.84	32.49	32.50	32.47	84.6	84.9	85.2	6.85	6.88	6.90	2.07	2.12	2.13	3	
17/3/2014	10:15	Fine	Middle	3.0	17.80	17.80	17.85	7.84	7.84	7.85	35.88	35.88	35.88	84.3	85.1	85.1	6.44	6.50	6.50	3.01	2.94	2.95	5	4.50
	10:17		Middle	3.0	17.90	17.90	17.85	7.86	7.86	7.85	35.88	35.88	35.88	85.3	85.6	85.1	6.51	6.53	6.50	2.93	2.93	2.95	4	
19/3/2014	11:12	Fine	Middle	3.0	19.40	19.40	19.45	7.82	7.82	7.84	35.57	35.57	35.57	84.0	84.1	84.1	6.24	6.25	6.25	2.94	2.93	2.93	2	2.50
	11:14		Middle	3.0	19.50	19.50	19.45	7.85	7.85	7.84	35.56	35.56	35.57	84.4	83.9	84.1	6.26	6.23	6.25	2.93	2.93	2.93	3	
21/3/2014	12:30	Fine	Middle	2.5	17.30	17.30	17.30	8.16	8.16	8.16	35.65	35.65	36.15	73.3	73.9	73.5	5.68	5.73	5.69	3.92	3.92	3.92	3	3.00
	12:32		Middle	2.5	17.30	17.30	17.30	8.16	8.16	8.16	36.65	36.65	36.15	73.7	72.9	73.5	5.71	5.65	5.69	3.91	3.92	3.92	3	
24/3/2014	17:45	Cloudy	Middle	2.5	19.30	19.30	19.30	8.18	8.18	8.19	31.33	31.33	31.25	82.3	81.9	81.6	6.13	6.12	6.11	2.16	2.00	2.00	<2	<2
	17:46		Middle	2.5	19.30	19.30	19.30	8.19	8.19	8.19	31.17	31.17	31.25	81.6	80.4	81.6	6.11	6.08	6.11	2.08	1.76	2.00	<2	
26/3/2014	18:40	Fine	Middle	2.5	21.00	21.00	21.00	7.97	7.97	7.97	37.67	37.81	37.69	73.4	72.9	72.9	5.47	5.54	5.38	1.07	1.20	1.10	3	3.00
	18:41		Middle	2.5	21.00	21.00	21.00	7.97	7.97	7.97	37.69	37.57	37.69	73.0	72.1	72.9	5.33	5.19	5.38	1.11	1.03	1.10	3	

Remarks:
Single underline denotes exceedance over Action Level.
Double underline denotes exceedance over Limit Level.



**Water Monitoring Result at WSD17 - Quarry Bay
Mid-Ebb Tide**

Date	Time	Weather Condition	Sampling Depth		Water Temperature			pH			Salinity			DO Saturation		DO		Turbidity		Suspended Solids				
					°C			-			ppt			%		mg/L		NTU		mg/L				
			m	Value	Average	Value	Average	Value	Average	Value	Average	Value	Average	Value	Average	Value	Average	Value	Average	Value	Average			
28/2/2014	11:00	Cloudy	Middle	3	17.60	17.60	17.60	8.53	8.53	8.53	36.43	36.43	36.43	96.0	95.3	95.0	7.38	7.33	7.30	5.29	5.37	5.36	5	4.50
	11:02		Middle	3	17.60	17.60	17.60	8.53	8.53	8.53	36.43	36.43	36.43	94.4	94.1	95.0	7.25	7.23	7.30	5.39	5.40	5.36	4	
3/3/2014	12:23	Cloudy	Middle	4	17.20	17.20	17.20	8.56	8.56	8.56	36.63	36.63	36.63	87.0	88.1	87.7	6.72	6.80	6.77	4.72	4.71	4.69	4	3.50
	12:25		Middle	4	17.20	17.20	17.20	8.56	8.56	8.56	36.63	36.63	36.63	88.4	87.2	87.7	6.82	6.73	6.77	4.71	4.62	4.69	3	
5/3/2014	14:05	Cloudy	Middle	3	17.50	17.50	17.50	8.45	8.45	8.45	36.35	36.35	36.35	83.0	83.6	83.5	6.37	6.44	6.42	5.01	4.99	4.98	7	7.00
	14:07		Middle	3	17.50	17.50	17.50	8.45	8.45	8.45	36.35	36.35	36.35	83.5	83.8	83.5	6.42	6.44	6.42	4.97	4.96	4.98	7	
7/3/2014	16:00	Fine	Middle	3	16.50	16.50	16.50	8.18	8.18	8.18	33.16	33.16	33.17	92.5	92.8	92.4	7.39	7.42	7.38	7.81	7.89	7.86	7	8.00
	16:02		Middle	3	16.50	16.50	16.50	8.18	8.18	8.18	33.17	33.17	33.17	92.3	91.9	92.4	7.38	7.34	7.38	7.90	7.82	7.86	9	
10/3/2014	20:52	Cloudy	Middle	3	15.50	15.50	15.50	7.80	7.81	7.82	35.24	35.24	35.24	66.9	66.7	66.6	5.38	5.36	5.36	5.70	5.68	5.60	6	5.50
	20:53		Middle	3	15.50	15.50	15.50	7.84	7.84	7.82	35.24	35.24	35.24	66.5	66.4	66.6	5.35	5.34	5.36	5.53	5.47	5.60	5	
12/3/2014	0:30	Cloudy	Middle	3	17.40	17.40	17.48	8.22	8.22	8.22	32.73	32.73	32.74	82.5	83.2	81.6	6.49	6.64	6.44	4.46	4.51	4.50	5	4.50
	0:31		Middle	3	17.50	17.60	17.48	8.22	8.22	8.22	32.74	32.74	32.74	80.4	80.1	81.6	6.32	6.30	6.44	4.53	4.48	4.50	4	
14/3/2014	0:35	Cloudy	Middle	3	16.00	16.00	16.05	8.01	8.01	8.02	32.56	32.56	32.56	78.8	80.7	79.8	7.71	7.89	7.83	3.59	3.72	3.57	4	3.00
	0:36		Middle	3	16.10	16.10	16.05	8.02	8.02	8.02	32.55	32.55	32.56	81.0	78.8	79.8	7.96	7.74	7.83	3.52	3.46	3.57	2	
17/3/2014	11:25	Fine	Middle	3	17.50	17.50	17.65	8.04	8.04	8.05	36.01	36.01	35.93	85.8	86.8	85.9	6.59	6.66	6.59	6.39	6.36	6.37	8	8.00
	11:27		Middle	3	17.80	17.80	17.65	8.05	8.05	8.05	35.85	35.85	35.93	85.7	85.3	85.9	6.57	6.53	6.59	6.34	6.40	6.37	8	
19/3/2014	15:15	Fine	Middle	3	19.20	19.20	19.45	7.84	7.84	7.85	35.39	35.39	35.38	83.2	83.9	83.1	6.20	6.26	6.19	3.83	3.91	3.93	5	4.50
	15:17		Middle	3	19.70	19.70	19.45	7.86	7.86	7.85	35.36	35.36	35.38	82.8	82.5	83.1	6.16	6.13	6.19	3.97	4.00	3.93	4	
21/3/2014	15:46	Fine	Middle	3	17.30	17.30	17.30	7.96	7.96	7.97	35.60	35.60	35.61	71.2	71.5	71.5	5.52	5.54	5.54	3.92	3.92	3.93	6	6.00
	15:47		Middle	3	17.30	17.30	17.30	7.98	7.98	7.97	35.62	35.62	35.61	71.5	71.6	71.5	5.54	5.55	5.54	3.92	3.95	3.93	6	
24/3/2014	18:45	Cloudy	Middle	4	18.40	18.40	18.40	8.00	8.01	8.01	35.87	35.87	35.87	78.1	79.9	79.6	6.70	6.69	6.82	4.13	4.23	4.09	3	4.00
	18:46		Middle	4	18.40	18.40	18.40	8.01	8.01	8.01	35.87	35.87	35.87	80.2	80.1	79.6	6.88	7.00	6.82	3.96	4.04	4.09	5	
26/3/2014	19:40	Fine	Middle	4	20.90	20.90	20.90	8.02	8.02	8.02	36.81	36.81	36.45	64.0	65.5	64.8	4.93	4.99	4.96	4.32	4.11	4.21	6	7.00
	19:41		Middle	4	20.90	20.90	20.90	8.02	8.02	8.02	36.09	36.09	36.45	64.8	64.7	64.8	4.97	4.96	4.96	4.19	4.20	4.21	8	

Remarks:
Single underline denotes exceedance over Action Level.
Double underline denotes exceedance over Limit Level.



**Water Monitoring Result at C7 - Windsor House
Mid-Ebb Tide**

Date	Time	Weather Condition	Sampling Depth		Water Temperature			pH			Salinity			DO Saturation		DO		Turbidity		Suspended Solids				
					°C		-		ppt		%		mg/L		NTU		mg/L							
			m	Value	Average	Value	Average	Value	Average	Value	Average	Value	Average	Value	Average	Value	Average	Value	Average					
28/2/2014	13:12	Cloudy	Middle	2	17.70	17.70	17.70	8.44	8.44	8.44	35.85	35.85	35.85	88.5	88.5	88.0	6.79	6.79	6.75	2.59	2.59	2.59	3	2.50
	13:14		Middle	2	17.70	17.70		8.44	8.44		35.85	35.85		87.5	87.6		6.71	6.72		2.59	2.58		2	
3/3/2014	14:47	Cloudy	Middle	2	17.00	17.00	17.00	8.47	8.47	8.47	35.93	35.93	35.93	71.0	71.6	71.3	5.52	5.56	5.54	2.60	2.59	2.60	3	3.00
	14:49		Middle	2	17.00	17.00		8.47	8.47		35.93	35.93		71.3	71.3		5.54	5.54		2.59	2.60		3	
5/3/2014	13:37	Cloudy	Middle	2	17.80	17.80	17.75	8.38	8.38	8.38	35.54	35.54	35.54	63.8	63.1	63.3	4.91	4.86	4.87	2.14	2.15	2.15	3	3.00
	13:39		Middle	2	17.70	17.70		8.38	8.38		35.53	35.53		63.0	63.2		4.85	4.86		2.15	2.15		3	
7/3/2014	15:32	Fine	Middle	2	16.70	16.70	16.65	8.21	8.21	8.21	32.85	32.85	32.85	75.0	75.5	75.4	5.98	6.03	6.09	5.49	5.50	5.47	2	3.00
	15:34		Middle	2	16.60	16.60		8.21	8.21		32.85	32.85		75.5	75.6		6.30	6.03		5.45	5.42		4	
10/3/2014	20:08	Cloudy	Middle	2	15.60	15.60	15.60	7.76	7.76	7.77	33.76	33.76	33.76	54.6	54.8	54.7	4.43	4.44	4.44	1.85	1.83	1.82	3	2.50
	20:09		Middle	2	15.60	15.60		7.79	7.78		33.76	33.76		54.8	54.7		4.44	4.43		1.81	1.79		2	
12/3/2014	0:02	Cloudy	Middle	1	17.90	17.90	17.90	8.01	8.01	8.01	30.29	30.29	30.29	58.6	59.1	59.0	4.64	4.68	4.67	2.44	2.47	2.49	4	3.50
	0:03		Middle	1	17.90	17.90		8.01	8.01		30.28	30.28		59.1	59.1		4.67	4.67		2.51	2.55		3	
14/3/2014	0:02	Cloudy	Middle	1	15.90	15.90	15.90	8.19	8.19	8.19	30.78	30.78	30.78	56.3	56.7	56.2	4.62	4.65	4.61	2.67	2.73	2.73	4	3.50
	0:03		Middle	1	15.90	15.90		8.18	8.18		30.77	30.77		56.1	55.7		4.61	4.57		2.75	2.78		3	
17/3/2014	14:17	Fine	Middle	2	18.20	18.20	18.25	7.90	7.90	7.90	35.20	35.20	35.20	63.1	63.3	63.6	4.81	4.83	4.85	2.32	2.31	2.31	3	2.50
	14:19		Middle	2	18.30	18.30		7.89	7.89		35.20	35.20		63.6	64.3		4.85	4.90		2.31	2.31		2	
19/3/2014	14:57	Fine	Middle	2	19.70	19.70	19.80	7.84	7.84	7.83	34.53	34.53	34.53	62.7	62.9	62.9	4.67	4.68	4.68	2.48	2.45	2.45	2	2.00
	14:59		Middle	2	19.90	19.90		7.82	7.82		34.53	34.54		62.9	62.9		4.68	4.68		2.43	2.42		2	
21/3/2014	15:07	Fine	Middle	2	17.50	17.50	17.50	7.92	7.92	7.92	34.88	34.88	34.88	55.3	55.4	55.5	4.28	4.29	4.30	1.46	1.48	1.49	4	4.00
	15:09		Middle	2	17.50	17.50		7.91	7.91		34.87	34.87		55.6	55.7		4.31	4.32		1.50	1.50		4	
24/3/2014	18:13	Cloudy	Middle	2	18.70	18.70	18.70	8.15	8.15	8.15	35.03	35.04	35.03	61.0	61.3	60.8	5.19	5.23	4.92	2.36	2.31	2.35	3	3.50
	18:14		Middle	2	18.70	18.70		8.15	8.14		35.03	35.03		59.9	60.8		4.55	4.69		2.33	2.39		4	
26/3/2014	19:10	Fine	Middle	2	21.70	21.70	21.70	7.67	7.67	7.68	31.38	31.38	31.40	51.0	51.3	51.4	3.93	3.95	3.95	1.06	1.11	1.08	2	2.50
	19:11		Middle	2	21.70	21.70		7.69	7.69		31.43	31.41		51.5	51.8		3.94	3.97		1.09	1.05		3	

Remarks:
Single underline denotes exceedance over Action Level.
Double underline denotes exceedance over Limit Level.



**Water Monitoring Result at C1 - HKCEC
Mid-Ebb Tide**

Date	Time	Weather Condition	Sampling Depth		Water Temperature			pH			Salinity		DO Saturation		DO		Turbidity		Suspended Solids					
			m		°C		-		ppt		%		mg/L		NTU		mg/L							
					Value	Average	Value	Average	Value	Average	Value	Average	Value	Average	Value	Average	Value	Average						
28/2/2014	11:11	Cloudy	Middle	2.5	17.20	17.20	17.20	8.35	8.35	8.35	33.82	33.83	33.83	85.1	86.1	85.5	6.68	6.75	6.71	1.80	1.80	1.80	5	4.50
	11:13		Middle	2.5	17.20	17.20	17.20	8.35	8.35	8.35	33.83	33.82	33.83	85.8	85.1	85.5	6.73	6.67	6.71	1.80	1.80	1.80	4	4.50
3/3/2014	15:11	Cloudy	Middle	2.0	17.40	17.40	17.40	8.38	8.38	8.38	34.03	34.03	34.04	80.5	79.5	79.5	6.29	6.21	6.21	5.85	5.81	5.78	5	5.00
	15:13		Middle	2.0	17.40	17.40	17.40	8.38	8.38	8.38	34.04	34.04	34.04	79.2	78.8	79.5	6.19	6.15	6.21	5.77	5.67	5.78	5	5.00
5/3/2014	15:03	Cloudy	Middle	2.5	17.50	17.50	17.50	8.31	8.31	8.31	33.96	33.96	33.96	89.4	88.1	88.0	6.96	6.87	6.87	4.08	4.09	4.09	6	6.00
	15:05		Middle	2.5	17.50	17.50	17.50	8.31	8.31	8.31	33.96	33.96	33.96	87.4	86.9	88.0	6.82	6.81	6.87	4.08	4.09	4.09	6	6.00
7/3/2014	16:46	Fine	Middle	2.5	16.70	16.70	16.65	8.31	8.31	8.33	33.91	33.91	34.00	83.4	82.9	82.5	6.62	6.59	6.56	4.78	4.81	4.84	6	5.50
	16:48		Middle	2.5	16.60	16.60	16.65	8.35	8.35	8.33	34.08	34.08	34.00	82.2	81.4	82.5	6.53	6.48	6.56	4.86	4.90	4.84	5	5.50
10/3/2014	20:35	Cloudy	Middle	3.0	15.80	15.80	15.70	8.40	8.40	8.41	33.88	33.88	33.89	82.6	82.2	82.0	6.67	6.65	6.64	2.90	2.88	2.86	3	3.50
	20:37		Middle	3.0	15.60	15.60	15.70	8.41	8.41	8.41	33.90	33.90	33.89	81.7	81.5	82.0	6.62	6.61	6.64	2.84	2.81	2.86	4	3.50
12/3/2014	22:28	Cloudy	Middle	2.0	16.50	16.50	16.60	8.39	8.39	8.38	34.23	34.23	34.22	72.0	71.7	71.9	5.71	5.68	5.70	2.83	2.77	2.79	4	5.00
	22:30		Middle	2.0	16.70	16.70	16.60	8.37	8.37	8.38	34.20	34.20	34.22	71.6	72.1	71.9	5.68	5.71	5.70	2.80	2.76	2.79	6	5.00
14/3/2014	0:11	Cloudy	Middle	3.0	15.90	15.90	15.85	8.29	8.29	8.29	33.54	33.54	33.54	70.7	70.3	70.3	5.71	5.69	5.69	18.96	18.88	<u>18.87</u>	23	<u>22.50</u>
	0:13		Middle	3.0	15.80	15.80	15.85	8.29	8.29	8.29	33.54	33.54	33.54	70.2	70.0	70.3	5.69	5.68	5.69	18.84	18.79	18.87	22	22.50
17/3/2014	13:40	Fine	Middle	3.0	17.00	17.00	17.05	8.21	8.21	8.21	33.50	33.50	33.51	69.9	69.4	69.7	5.50	5.46	5.48	3.11	3.12	3.13	8	7.50
	13:42		Middle	3.0	17.10	17.10	17.05	8.21	8.21	8.21	33.51	33.51	33.51	70.3	69.3	69.7	5.52	5.44	5.48	3.14	3.13	3.13	7	7.50
19/3/2014	14:03	Fine	Middle	2.0	18.30	18.30	18.40	8.51	8.51	8.51	33.49	33.49	33.50	64.0	61.4	61.1	4.92	4.71	4.69	5.41	5.41	5.42	7	7.50
	14:05		Middle	2.0	18.50	18.50	18.40	8.50	8.50	8.51	33.50	33.50	33.50	60.4	58.6	61.1	4.64	4.50	4.69	5.42	5.44	5.42	8	7.50
21/3/2014	15:10	Fine	Middle	3.0	17.40	17.40	17.35	8.14	8.14	8.14	33.27	33.27	33.30	69.5	68.6	68.9	5.45	5.39	5.41	4.18	4.21	4.22	5	5.00
	15:12		Middle	3.0	17.30	17.30	17.35	8.14	8.14	8.14	33.32	33.32	33.30	68.7	68.6	68.9	5.39	5.39	5.41	4.23	4.24	4.22	5	5.00
24/3/2014	17:51	Cloudy	Middle	2.5	18.10	18.10	18.15	8.24	8.24	8.25	33.67	33.67	33.69	87.5	87.3	87.2	6.75	6.74	6.73	1.98	1.93	1.91	4	3.00
	17:53		Middle	2.5	18.20	18.20	18.15	8.25	8.25	8.25	33.70	33.70	33.69	87.1	86.8	87.2	6.73	6.71	6.73	1.89	1.82	1.91	2	3.00
26/3/2014	21:24	Fine	Middle	2.5	18.50	18.50	18.55	8.12	8.12	8.12	33.28	33.28	33.29	73.1	72.9	72.7	5.61	5.59	5.58	2.16	2.13	2.12	4	4.00
	21:26		Middle	2.5	18.60	18.60	18.55	8.11	8.11	8.12	33.29	33.29	33.29	72.5	72.1	72.7	5.57	5.54	5.58	2.11	2.06	2.12	4	4.00

Remarks:
Single underline denotes exceedance over Action Level.
Double underline denotes exceedance over Limit Level.



**Water Monitoring Result at P1 - HKCEC Phase I
Mid-Ebb Tide**

Date	Time	Weather Condition	Sampling Depth		Water Temperature			pH			Salinity		DO Saturation		DO		Turbidity		Suspended Solids					
			m		°C		-		ppt		%		mg/L		NTU		mg/L							
					Value	Average	Value	Average	Value	Average	Value	Average	Value	Average	Value	Average	Value	Average						
28/2/2014	11:41	Cloudy	Middle	2.5	17.20	17.20	17.20	8.31	8.31	8.31	33.92	33.91	33.92	90.0	90.2	89.9	7.05	7.08	7.03	4.01	4.00	4.00	5	5.50
	11:43		Middle	2.5	17.20	17.20	17.20	8.31	8.31	8.31	33.91	33.92	33.92	89.9	89.5	89.9	7.00	6.97	7.03	3.98	3.99	4.00	6	
3/3/2014	15:51	Cloudy	Middle	2.5	17.00	17.00	17.15	8.35	8.35	8.35	33.87	33.87	33.87	76.7	76.9	78.4	6.00	6.02	6.14	3.35	3.36	3.39	4	4.00
	15:53		Middle	2.5	17.30	17.30	17.15	8.35	8.35	8.35	33.86	33.86	33.87	80.6	79.3	78.4	6.31	6.21	6.14	3.41	3.44	3.39	4	
5/3/2014	15:37	Cloudy	Middle	2.5	17.40	17.40	17.40	8.32	8.32	8.32	33.95	33.95	33.96	93.2	91.6	91.5	7.30	7.16	7.12	4.22	4.22	4.22	5	4.50
	15:39		Middle	2.5	17.40	17.40	17.40	8.32	8.32	8.32	33.96	33.96	33.96	90.9	90.1	91.5	7.06	6.97	7.12	4.22	4.22	4.22	4	
7/3/2014	17:21	Fine	Middle	2.5	16.60	16.60	16.55	8.39	8.39	8.40	34.02	34.02	34.05	81.6	81.0	80.5	6.49	6.42	6.40	6.22	6.20	6.22	8	8.50
	17:23		Middle	2.5	16.50	16.50	16.55	8.41	8.41	8.40	34.07	34.07	34.05	80.0	79.2	80.5	6.38	6.31	6.40	6.23	6.24	6.22	9	
10/3/2014	21:25	Cloudy	Middle	3.0	15.70	15.70	15.65	8.42	8.42	8.42	33.92	33.92	33.93	82.4	82.1	82.0	6.67	6.65	6.65	6.87	6.89	6.87	8	8.50
	21:27		Middle	3.0	15.60	15.60	15.65	8.42	8.42	8.42	33.93	33.93	33.93	81.9	81.6	82.0	6.64	6.62	6.65	6.89	6.82	6.87	9	
12/3/2014	23:13	Cloudy	Middle	2.5	16.50	16.50	16.55	8.35	8.35	8.35	33.77	33.77	33.75	84.9	81.8	81.2	6.76	6.87	6.55	4.28	4.24	4.24	4	5.00
	23:15		Middle	2.5	16.60	16.60	16.55	8.35	8.35	8.35	33.72	33.72	33.75	79.3	78.9	81.2	6.31	6.27	6.55	4.23	4.22	4.24	6	
14/3/2014	23:10	Cloudy	Middle	3.0	16.10	16.10	16.10	8.17	8.17	8.20	35.62	35.62	35.66	64.8	64.5	64.3	5.14	5.12	5.11	10.87	10.83	<u>10.81</u>	11	10.50
	23:12		Middle	3.0	16.10	16.10	16.10	8.22	8.22	8.20	35.70	35.70	35.66	64.1	63.8	64.3	5.10	5.08	5.11	10.81	10.74	<u>10.81</u>	10	
17/3/2014	14:09	Fine	Middle	3.0	17.10	17.10	17.20	8.23	8.23	8.23	33.58	33.58	33.57	71.7	71.7	71.6	5.63	5.66	5.62	5.41	5.41	5.41	9	8.50
	14:11		Middle	3.0	17.30	17.30	17.20	8.22	8.22	8.23	33.55	33.55	33.57	71.5	71.5	71.6	5.59	5.61	5.62	5.41	5.41	5.41	8	
19/3/2014	14:27	Fine	Middle	2.5	18.30	18.30	18.30	8.27	8.27	8.26	33.38	33.38	33.39	63.0	63.1	61.8	4.86	4.85	4.76	5.44	5.47	5.51	10	10.50
	14:29		Middle	2.5	18.30	18.30	18.30	8.24	8.24	8.26	33.40	33.40	33.39	61.0	60.1	61.8	4.70	4.63	4.76	5.53	5.60	5.51	11	
21/3/2014	15:45	Fine	Middle	3.0	17.10	17.10	17.05	8.14	8.14	8.14	33.17	33.17	33.24	62.4	66.0	64.6	4.93	5.22	5.11	3.94	3.94	3.93	7	6.00
	15:47		Middle	3.0	17.00	17.00	17.05	8.14	8.14	8.14	33.30	33.30	33.24	66.2	63.8	64.6	5.23	5.04	5.11	3.93	3.92	3.93	5	
24/3/2014	18:50	Cloudy	Middle	2.5	18.20	18.20	18.25	8.22	8.22	8.22	33.53	33.53	33.54	86.8	86.5	86.3	6.69	6.67	6.66	4.67	4.68	4.64	3	3.00
	18:52		Middle	2.5	18.30	18.30	18.25	8.22	8.22	8.22	33.55	33.55	33.54	86.1	85.8	86.3	6.65	6.63	6.66	4.63	4.57	4.64	3	
26/3/2014	20:42	Fine	Middle	2.5	18.90	18.90	19.00	8.17	8.17	8.17	33.29	33.29	33.30	78.4	78.2	78.1	5.97	5.96	5.96	5.48	5.51	5.46	5	4.50
	20:44		Middle	2.5	19.10	19.10	19.00	8.16	8.16	8.17	33.30	33.30	33.30	78.1	77.8	78.1	5.96	5.94	5.96	5.44	5.41	5.46	4	

Remarks:
Single underline denotes exceedance over Action Level.
Double underline denotes exceedance over Limit Level.



**Water Monitoring Result at P3 - APA
Mid-Ebb Tide**

Date	Time	Weather Condition	Sampling Depth		Water Temperature			pH			Salinity		DO Saturation		DO		Turbidity		Suspended Solids					
			m		°C		-		ppt		%		mg/L		NTU		mg/L							
					Value	Average	Value	Average	Value	Average	Value	Average	Value	Average	Value	Average	Value	Average						
28/2/2014	11:31	Cloudy	Middle	2.5	17.10	17.10	17.10	8.31	8.31	8.31	33.88	33.89	33.89	90.3	88.9	89.2	7.10	6.98	7.01	4.87	4.88	4.87	5	4.50
	11:33		Middle	2.5	17.10	17.10	17.10	8.31	8.31	8.31	33.89	33.88	33.89	88.7	88.8	89.2	6.97	6.98	7.01	4.86	4.87	4.87	4	
3/3/2014	15:40	Cloudy	Middle	2.5	17.20	17.20	17.20	8.35	8.35	8.36	34.00	34.00	34.02	76.4	76.1	76.6	5.98	5.96	6.00	3.65	3.67	3.68	4	4.00
	15:42		Middle	2.5	17.20	17.20	17.20	8.36	8.36	8.36	34.03	34.03	34.02	76.7	77.1	76.6	6.01	6.04	6.00	3.70	3.71	3.68	4	
5/3/2014	15:28	Cloudy	Middle	2.5	17.40	17.40	17.40	8.32	8.32	8.32	33.99	33.97	33.98	88.6	86.6	87.0	6.89	6.78	6.80	3.72	3.73	3.76	5	5.50
	15:30		Middle	2.5	17.40	17.40	17.40	8.32	8.32	8.32	33.97	33.99	33.98	86.2	86.6	87.0	6.75	6.79	6.80	3.78	3.79	3.76	6	
7/3/2014	17:09	Fine	Middle	2.5	16.50	16.50	16.50	8.37	8.37	8.38	33.37	33.37	33.38	78.5	78.0	77.5	6.27	6.24	6.20	7.60	7.56	7.53	10	9.00
	17:11		Middle	2.5	16.50	16.50	16.50	8.39	8.39	8.38	33.39	33.39	33.38	77.0	76.4	77.5	6.16	6.12	6.20	7.50	7.46	7.53	8	
10/3/2014	21:05	Cloudy	Middle	3.0	16.00	16.00	15.75	8.39	8.39	8.40	33.86	33.86	33.84	85.3	85.1	85.0	6.90	6.89	6.88	6.63	6.58	6.57	10	10.00
	21:07		Middle	3.0	15.50	15.50	15.75	8.41	8.41	8.40	33.82	33.82	33.84	84.8	84.6	85.0	6.87	6.85	6.88	6.55	6.53	6.57	10	
12/3/2014	23:00	Cloudy	Middle	2.5	16.40	16.40	16.45	8.35	8.35	8.35	33.71	33.71	33.73	76.4	75.5	75.0	6.08	6.01	5.97	4.72	4.74	4.73	6	6.00
	23:02		Middle	2.5	16.50	16.50	16.45	8.35	8.35	8.35	33.75	33.75	33.73	74.6	73.4	75.0	5.94	5.84	5.97	4.73	4.72	4.73	6	
14/3/2014	23:29	Cloudy	Middle	3.0	15.80	15.80	15.75	8.27	8.27	8.28	33.63	33.63	33.63	80.1	79.8	79.7	6.48	6.46	6.45	13.54	13.47	<u>13.47</u>	7	7.50
	23:31		Middle	3.0	15.70	15.70	15.75	8.28	8.28	8.28	33.63	33.63	33.63	79.5	79.3	79.7	6.44	6.43	6.45	13.49	13.38	13.47	8	
17/3/2014	14:02	Fine	Middle	3.0	17.10	17.10	17.20	8.23	8.23	8.23	35.01	35.01	34.84	71.9	72.3	72.4	5.64	5.69	5.70	5.96	5.96	5.96	7	7.00
	14:04		Middle	3.0	17.30	17.30	17.20	8.22	8.22	8.23	34.68	34.64	34.84	72.5	72.7	72.4	5.71	5.74	5.70	5.95	5.95	5.96	7	
19/3/2014	14:20	Fine	Middle	2.5	18.00	18.00	18.05	8.28	8.28	8.27	33.37	33.37	33.40	64.7	63.4	62.6	5.01	4.91	4.85	4.82	4.78	4.77	8	7.50
	14:22		Middle	2.5	18.10	18.10	18.05	8.26	8.26	8.27	33.42	33.42	33.40	62.0	60.4	62.6	4.79	4.68	4.85	4.75	4.74	4.77	7	
21/3/2014	15:34	Fine	Middle	3.0	17.20	17.20	17.15	8.11	8.11	8.12	33.21	33.22	33.26	66.3	66.0	66.7	5.22	5.20	5.25	3.93	3.92	3.92	6	6.00
	15:36		Middle	3.0	17.10	17.10	17.15	8.13	8.13	8.12	33.30	33.30	33.26	66.5	67.9	66.7	5.24	5.35	5.25	3.92	3.92	3.92	6	
24/3/2014	18:30	Cloudy	Middle	2.5	17.70	17.70	17.80	8.21	8.21	8.22	33.51	33.51	33.53	88.4	87.9	87.8	6.83	6.84	6.82	8.17	8.14	8.13	2	2.50
	18:32		Middle	2.5	17.90	17.90	17.80	8.22	8.22	8.22	33.54	33.54	33.53	87.5	87.2	87.8	6.82	6.80	6.82	8.10	8.11	8.13	3	
26/3/2014	20:55	Fine	Middle	2.5	18.50	18.50	18.55	8.13	8.13	8.13	33.27	33.27	33.28	76.3	76.1	76.0	5.86	5.85	5.85	2.94	2.90	2.90	4	4.00
	20:57		Middle	2.5	18.60	18.60	18.55	8.12	8.12	8.13	33.29	33.29	33.28	75.9	75.7	76.0	5.84	5.83	5.85	2.89	2.86	2.90	4	

Remarks:
Single underline denotes exceedance over Action Level.
Double underline denotes exceedance over Limit Level.



**Water Monitoring Result at P4 - SOC
Mid-Ebb Tide**

Date	Time	Weather Condition	Sampling Depth		Water Temperature			pH			Salinity		DO Saturation		DO		Turbidity		Suspended Solids					
					°C			-			ppt		%		mg/L		NTU		mg/L					
			m	Value	Average	Value	Average	Value	Average	Value	Average	Value	Average	Value	Average	Value	Average	Value	Average					
28/2/2014	11:23	Cloudy	Middle	2.5	17.10	17.10	17.10	8.31	8.31	8.31	33.83	33.83	33.83	81.3	82.1	82.0	6.39	6.45	6.44	2.37	2.35	2.36	3	3.50
	11:25		Middle	2.5	17.10	17.10	17.10	8.31	8.31	8.31	33.83	33.83	33.83	82.2	82.3	82.0	6.46	6.46	6.44	2.35	2.35	2.36	4	
3/3/2014	15:29	Cloudy	Middle	2.5	17.30	17.30	17.25	8.35	8.35	8.35	35.84	35.84	35.85	76.1	77.0	77.1	5.95	6.03	6.04	3.29	3.30	3.32	4	4.00
	15:31		Middle	2.5	17.20	17.20	17.25	8.35	8.35	8.35	35.85	35.85	35.85	77.7	77.4	77.1	6.10	6.07	6.04	3.33	3.35	3.32	4	
5/3/2014	15:17	Cloudy	Middle	2.5	17.40	17.40	17.40	8.31	8.31	8.31	34.02	34.00	34.01	81.1	80.9	81.1	6.34	6.33	6.34	3.34	3.35	3.33	6	6.00
	15:19		Middle	2.5	17.40	17.40	17.40	8.31	8.31	8.31	34.00	34.02	34.01	81.3	81.0	81.1	6.37	6.33	6.34	3.31	3.32	3.33	6	
7/3/2014	17:01	Fine	Middle	2.5	16.50	16.50	16.55	8.38	8.38	8.38	34.05	34.05	34.06	80.6	79.0	78.7	6.36	6.24	6.22	5.16	5.00	4.95	6	6.50
	17:02		Middle	2.5	16.60	16.60	16.55	8.38	8.38	8.38	34.06	34.06	34.06	77.8	77.2	78.7	6.17	6.09	6.22	4.83	4.81	4.95	7	
10/3/2014	20:58	Cloudy	Middle	3.0	15.50	15.50	15.45	8.39	8.39	8.40	33.96	33.96	33.98	81.0	80.7	80.6	6.57	6.55	6.55	5.65	5.60	5.60	9	9.50
	21:00		Middle	3.0	15.40	15.40	15.45	8.40	8.40	8.40	34.00	34.00	33.98	80.5	80.3	80.6	6.54	6.53	6.55	5.59	5.56	5.60	10	
12/3/2014	22:47	Cloudy	Middle	2.5	16.40	16.40	16.45	8.34	8.34	8.34	33.52	33.52	33.51	71.9	72.0	71.5	5.73	5.73	5.69	3.29	3.29	3.30	6	5.50
	22:49		Middle	2.5	16.50	16.50	16.45	8.34	8.34	8.34	33.50	33.50	33.51	71.3	70.9	71.5	5.67	5.64	5.69	3.30	3.32	3.30	5	
14/3/2014	23:47	Cloudy	Middle	3.0	15.90	15.90	15.85	8.29	8.29	8.29	33.73	33.73	33.72	70.3	72.1	71.4	5.84	5.83	5.82	7.99	7.93	7.90	11	10.00
	23:49		Middle	3.0	15.80	15.80	15.85	8.29	8.29	8.29	33.70	33.70	33.72	71.7	71.6	71.4	5.81	5.81	5.82	7.87	7.82	7.90	9	
17/3/2014	13:52	Fine	Middle	3.0	17.20	17.20	17.30	8.23	8.23	8.23	33.58	33.58	33.57	69.9	70.0	70.1	5.46	5.46	5.47	3.96	3.95	3.96	7	7.50
	13:54		Middle	3.0	17.40	17.40	17.30	8.22	8.22	8.23	33.55	33.55	33.57	70.5	70.1	70.1	5.50	5.47	5.47	3.95	3.96	3.96	8	
19/3/2014	14:16	Fine	Middle	2.5	18.20	18.20	18.10	8.32	8.32	8.31	33.38	33.38	33.40	60.0	58.8	58.9	4.65	4.56	4.56	3.30	3.30	3.30	5	5.50
	14:18		Middle	2.5	18.00	18.00	18.10	8.30	8.29	8.31	33.42	33.42	33.40	58.3	58.3	58.9	4.52	4.52	4.56	3.32	3.28	3.30	6	
21/3/2014	15:25	Fine	Middle	2.5	17.30	17.30	17.30	8.12	8.12	8.13	33.23	33.24	33.26	68.3	66.5	67.7	5.36	5.22	5.32	3.71	3.67	3.60	4	4.00
	15:27		Middle	2.5	17.30	17.30	17.30	8.14	8.14	8.13	33.29	33.29	33.26	68.0	68.1	67.7	5.34	5.35	5.32	3.51	3.50	3.60	4	
24/3/2014	18:43	Cloudy	Middle	2.5	17.70	17.70	17.80	8.23	8.23	8.23	33.59	33.59	33.59	85.8	85.4	85.3	6.66	6.63	6.63	1.95	1.91	1.91	4	4.50
	18:45		Middle	2.5	17.90	17.90	17.80	8.23	8.23	8.23	33.59	33.59	33.59	85.2	84.9	85.3	6.62	6.60	6.63	1.89	1.88	1.91	5	
26/3/2014	21:09	Fine	Middle	2.5	18.40	18.00	18.35	8.14	8.14	8.14	33.27	33.27	33.27	75.6	75.2	75.1	5.81	5.79	5.78	2.79	2.78	2.75	6	5.00
	21:11		Middle	2.5	18.50	18.50	18.35	8.14	8.14	8.14	33.27	33.27	33.27	74.8	74.6	75.1	5.77	5.76	5.78	2.75	2.67	2.75	4	

Remarks:
Single underline denotes exceedance over Action Level.
Double underline denotes exceedance over Limit Level.



**Water Monitoring Result at P5 - WCT / RT / IT
Mid-Ebb Tide**

Date	Time	Weather Condition	Sampling Depth		Water Temperature			pH			Salinity			DO Saturation		DO		Turbidity		Suspended Solids				
			m		°C		-		ppt		%		mg/L		NTU		mg/L							
					Value	Average	Value	Average	Value	Average	Value	Average	Value	Average	Value	Average	Value	Average						
28/2/2014	11:19	Cloudy	Middle	2.5	17.10	17.10	17.10	8.32	8.32	8.32	33.84	33.84	33.84	86.3	86.6	86.1	6.78	6.80	6.76	2.76	2.77	2.77	3	3.50
	11:21		Middle	2.5	17.10	17.10	17.10	8.32	8.32	8.32	33.84	33.84	33.84	86.0	85.3	86.1	6.76	6.70	6.76	2.76	2.77	2.77	4	
3/3/2014	15:22	Cloudy	Middle	2.5	17.20	17.20	17.20	8.36	8.36	8.37	35.30	35.30	35.33	77.4	76.6	76.7	6.01	5.95	5.97	3.99	3.99	4.00	4	5.00
	15:24		Middle	2.5	17.20	17.20	17.20	8.37	8.37	8.37	35.35	35.35	35.33	75.9	77.0	76.7	5.91	6.00	5.97	4.00	4.03	4.00	6	
5/3/2014	15:12	Cloudy	Middle	2.5	17.50	17.50	17.50	8.31	8.31	8.31	33.98	33.99	33.99	89.1	87.6	87.7	6.95	6.84	6.84	4.65	4.64	4.66	6	7.00
	15:14		Middle	2.5	17.50	17.50	17.50	8.31	8.31	8.31	33.98	33.99	33.99	87.3	86.6	87.7	6.82	6.76	6.84	4.67	4.66	4.66	8	
7/3/2014	16:57	Fine	Middle	2.5	16.60	16.60	16.55	8.36	8.36	8.37	33.99	33.99	33.99	83.0	81.9	82.6	6.59	6.50	6.56	6.29	6.28	6.26	11	10.00
	16:59		Middle	2.5	16.50	16.50	16.55	8.38	8.38	8.37	33.98	33.98	33.99	82.5	82.9	82.6	6.56	6.57	6.56	6.26	6.21	6.26	9	
10/3/2014	20:47	Cloudy	Middle	3.0	15.60	15.60	15.55	8.40	8.40	8.40	33.96	33.96	33.97	80.6	80.5	80.3	6.51	6.51	6.49	4.26	4.30	4.26	8	7.50
	20:49		Middle	3.0	15.50	15.50	15.55	8.40	8.40	8.40	33.97	33.97	33.97	80.1	79.9	80.3	6.48	6.47	6.49	4.24	4.22	4.26	7	
12/3/2014	22:39	Cloudy	Middle	2.5	16.50	16.50	16.55	8.37	8.37	8.37	34.92	34.92	34.91	67.2	66.8	66.8	5.34	5.30	5.32	2.16	2.22	2.22	5	4.50
	22:41		Middle	2.5	16.60	16.60	16.55	8.36	8.36	8.37	34.89	34.89	34.91	66.5	66.6	66.8	5.31	5.31	5.32	2.24	2.25	2.22	4	
14/3/2014	23:56	Cloudy	Middle	3.0	16.00	16.00	15.95	8.29	8.29	8.25	33.44	33.44	33.43	67.5	67.3	67.2	5.40	5.39	5.39	14.92	14.87	<u>14.86</u>	12	11.50
	23:58		Middle	3.0	15.90	15.90	15.95	8.20	8.20	8.25	33.42	33.42	33.43	67.2	66.9	67.2	5.39	5.37	5.39	14.84	14.79	14.86	11	
17/3/2014	13:48	Fine	Middle	3.0	17.00	17.00	17.00	8.23	8.23	8.23	33.50	33.50	33.51	71.5	72.3	71.7	5.66	5.70	5.67	3.81	3.80	3.77	8	9.00
	13:50		Middle	3.0	17.00	17.00	17.00	8.22	8.22	8.23	33.51	33.51	33.51	71.3	71.7	71.7	5.69	5.64	5.67	3.72	3.73	3.77	10	
19/3/2014	14:12	Fine	Middle	2.5	18.20	18.20	18.25	8.37	8.37	8.36	33.48	33.48	33.46	59.4	59.0	59.3	4.58	4.55	4.57	4.31	3.89	4.01	6	6.50
	14:14		Middle	2.5	18.30	18.30	18.25	8.34	8.34	8.36	33.43	33.43	33.46	59.3	59.5	59.3	4.57	4.58	4.57	3.91	3.92	4.01	7	
21/3/2014	15:20	Fine	Middle	2.5	17.40	17.40	17.35	8.15	8.15	8.15	33.24	33.24	33.26	65.4	65.8	66.0	5.13	5.17	5.19	3.88	3.88	3.87	4	5.00
	15:22		Middle	2.5	17.30	17.30	17.35	8.15	8.15	8.15	33.27	33.27	33.26	66.3	66.6	66.0	5.21	5.23	5.19	3.87	3.85	3.87	6	
24/3/2014	18:02	Cloudy	Middle	2.5	17.80	17.80	17.85	8.24	8.24	8.24	33.57	33.57	33.57	86.4	86.2	86.1	6.71	6.70	6.69	2.35	2.37	2.33	4	4.00
	18:04		Middle	2.5	17.90	17.90	17.85	8.24	8.24	8.24	33.57	33.57	33.57	85.9	85.7	86.1	6.68	6.67	6.69	2.33	2.28	2.33	4	
26/3/2014	21:17	Fine	Middle	2.5	18.40	18.40	18.45	8.12	8.12	8.12	33.29	33.29	33.29	74.4	74.3	74.0	5.72	5.72	5.71	2.80	2.76	2.75	6	5.00
	21:19		Middle	2.5	18.50	18.50	18.45	8.12	8.12	8.12	33.29	33.29	33.29	73.9	73.5	74.0	5.70	5.68	5.71	2.74	2.69	2.75	4	

Remarks:
Single underline denotes exceedance over Action Level.
Double underline denotes exceedance over Limit Level.



**Water Monitoring Result at RW21-P789 - Sun Hung Kai Centre
Mid-Ebb Tide**

Date	Time	Weather Condition	Sampling Depth		Water Temperature			pH			Salinity		DO Saturation		DO		Turbidity		Suspended Solids					
			m		°C		-		ppt		%		mg/L		NTU		mg/L							
					Value	Average	Value	Average	Value	Average	Value	Average	Value	Average	Value	Average	Value	Average						
28/2/2014	12:35	Cloudy	Middle	3.0	17.40	17.40	17.40	8.45	8.45	8.45	36.17	36.17	36.17	85.0	85.1	84.9	6.54	6.53	6.53	3.12	3.12	3.16	2	3.00
	12:37		Middle	3.0	17.40	17.40	17.40	8.45	8.45	8.45	36.17	36.17	36.17	84.8	84.6	84.9	6.52	6.51	6.53	3.20	3.20	3.16	4	
3/3/2014	14:05	Cloudy	Middle	3.5	17.10	17.10	17.05	8.52	8.52	8.53	36.49	36.49	36.49	81.6	81.0	81.3	6.32	6.27	6.30	6.10	6.10	6.10	7	7.50
	14:07		Middle	3.5	17.00	17.00	17.05	8.53	8.53	8.53	36.49	36.49	36.49	81.4	81.2	81.3	6.31	6.30	6.30	6.10	6.11	6.10	8	
5/3/2014	15:05	Cloudy	Middle	3.5	17.50	17.50	17.50	8.45	8.45	8.45	36.21	36.21	36.21	83.2	84.1	83.9	6.41	6.47	6.46	5.43	5.42	5.39	4	4.50
	15:07		Middle	3.5	17.50	17.50	17.50	8.45	8.45	8.45	36.21	36.21	36.21	84.2	84.1	83.9	6.49	6.48	6.46	5.40	5.30	5.39	5	
7/3/2014	14:55	Fine	Middle	4.0	16.40	16.40	16.35	8.15	8.15	8.17	33.20	33.20	33.21	90.7	90.6	90.2	7.26	7.25	7.22	6.10	6.05	6.06	7	7.00
	14:57		Middle	4.0	16.30	16.30	16.35	8.19	8.19	8.17	33.21	33.21	33.21	90.2	89.4	90.2	7.22	7.16	7.22	6.02	6.08	6.06	7	
10/3/2014	19:30	Cloudy	Middle	3.0	15.70	15.70	15.70	7.90	7.90	7.90	35.10	35.10	35.10	57.3	57.4	57.4	4.60	4.60	4.60	5.20	5.55	5.51	6	6.00
	19:31		Middle	3.0	15.70	15.70	15.70	7.90	7.90	7.90	35.10	35.10	35.10	57.4	57.4	57.4	4.60	4.60	4.60	5.64	5.63	5.51	6	
12/3/2014	23:15	Cloudy	Middle	3.0	18.20	18.20	18.20	8.20	8.20	8.20	32.76	32.76	32.76	84.7	85.6	85.4	6.57	6.63	6.61	2.57	2.55	2.54	5	4.50
	23:16		Middle	3.0	18.20	18.20	18.20	8.20	8.20	8.20	32.76	32.76	32.76	85.5	85.6	85.4	6.62	6.63	6.61	2.52	2.50	2.54	4	
14/3/2014	23:23	Cloudy	Middle	3.0	16.00	16.00	16.00	8.15	8.15	8.15	32.72	32.72	32.73	79.0	79.9	79.9	6.40	6.47	6.47	5.57	5.68	5.67	6	5.00
	23:24		Middle	3.0	16.00	16.00	16.00	8.15	8.15	8.15	32.73	32.73	32.73	80.2	80.3	79.9	6.49	6.50	6.47	5.70	5.74	5.67	4	
17/3/2014	12:35	Fine	Middle	3.5	18.30	18.30	18.55	7.98	7.98	7.97	35.78	35.78	35.78	83.3	83.4	83.1	6.28	6.29	6.27	3.39	3.38	3.39	8	7.50
	12:37		Middle	3.5	18.80	18.80	18.55	7.96	7.96	7.97	35.78	35.78	35.78	83.0	82.7	83.1	6.26	6.23	6.27	3.37	3.41	3.39	7	
19/3/2014	14:20	Fine	Middle	3.5	19.70	19.70	19.90	7.90	7.90	7.89	35.62	35.62	35.62	75.4	74.7	74.9	5.57	5.58	5.54	2.85	2.86	2.85	5	4.50
	14:22		Middle	3.5	20.10	20.10	19.90	7.88	7.88	7.89	35.62	35.62	35.62	74.6	75.0	74.9	5.50	5.52	5.54	2.86	2.83	2.85	4	
21/3/2014	14:30	Fine	Middle	4.0	17.40	17.40	17.45	8.01	8.01	8.01	35.54	35.54	35.55	65.0	64.6	64.7	5.02	4.99	5.00	3.65	3.65	3.66	5	5.00
	14:32		Middle	4.0	17.50	17.50	17.45	8.01	8.01	8.01	35.55	35.55	35.55	64.6	64.7	64.7	4.99	5.00	5.00	3.65	3.67	3.66	5	
24/3/2014	19:50	Cloudy	Middle	3.5	18.20	18.20	18.25	8.16	8.16	8.16	35.77	35.77	35.81	71.4	72.6	72.3	6.30	6.40	6.04	2.09	2.07	2.06	4	4.00
	19:51		Middle	3.5	18.30	18.30	18.25	8.16	8.16	8.16	35.84	35.84	35.81	72.6	72.6	72.3	5.74	5.72	6.04	2.08	1.99	2.06	4	
26/3/2014	20:20	Fine	Middle	3.5	21.60	21.60	21.60	7.78	7.78	7.79	30.01	30.02	30.13	63.2	66.0	64.6	4.65	4.90	4.80	4.05	4.16	4.05	5	4.50
	20:21		Middle	3.5	21.60	21.60	21.60	7.79	7.79	7.79	30.24	30.24	30.13	65.4	63.9	64.6	4.87	4.76	4.80	4.00	3.98	4.05	4	

Remarks:
Single underline denotes exceedance over Action Level.
Double underline denotes exceedance over Limit Level.

Monitoring station WSD21 was relocated to the monitoring station RW-P789 since 06 March 2014



**Water Monitoring Result at WSD 21 - Wan Chai
Mid-Ebb Tide**

Date	Time	Weather Condition	Sampling Depth		Water Temperature			pH			Salinity			DO Saturation		DO		Turbidity		Suspended Solids				
					°C			-			ppt			%		mg/L		NTU		mg/L				
			m	Value	Average	Value	Average	Value	Average	Value	Average	Value	Average	Value	Average	Value	Average	Value	Average	Value	Average			
28/2/2014	10:49	Cloudy	Middle	1.5	17.50	17.50	17.50	8.49	8.49	8.49	34.25	34.25	34.50	89.7	90.8	90.3	6.98	7.10	7.04	7.10	7.09	7.10	9	9.00
	10:51		Middle	1.5	17.50	17.50		8.49	8.49		35.25	34.25		90.7	89.9		7.07	6.99		7.10	7.11		9	
3/3/2014	14:47	Cloudy	Middle	1.5	17.80	17.80	17.80	8.51	8.51	8.51	33.29	33.29	33.29	66.4	65.2	67.0	5.17	5.07	5.21	4.80	4.76	4.73	5	4.50
	14:49		Middle	1.5	17.80	17.80		8.51	8.51		33.29	33.29		68.6	67.6		5.33	5.26		4.68	4.66		4	
5/3/2014	14:37	Cloudy	Middle	1.5	17.50	17.50	17.50	8.33	8.33	8.33	33.30	33.29	33.30	76.1	75.9	75.8	5.96	5.94	5.93	5.07	5.06	5.06	11	10.50
	14:39		Middle	1.5	17.50	17.50		8.33	8.33		33.30	33.29		75.7	75.5		5.91	5.90		5.08	5.04		10	
7/3/2014	16:12	Fine	Middle	1.5	16.80	16.80	16.80	8.37	8.37	8.36	32.32	32.30	32.32	65.4	64.2	64.5	5.23	5.13	5.17	8.56	8.56	<u>8.57</u>	10	9.50
	16:14		Middle	1.5	16.80	16.80		8.34	8.34		32.32	32.32		64.0	64.4		5.14	5.17		8.59	8.55		9	
10/3/2014	20:08	Cloudy	Middle	1.5	16.00	16.00	15.95	8.61	8.61	8.61	23.65	23.65	23.64	77.4	77.2	77.0	6.62	6.61	6.60	12.72	12.68	<u>12.66</u>	13	12.50
	20:10		Middle	1.5	15.90	15.90		8.61	8.61		23.62	23.62		76.8	76.4		6.59	6.57		12.63	12.61		12	

Remarks:
Single underline denotes exceedance over Action Level.
Double underline denotes exceedance over Limit Level.

Monitoring station WSD21 was relocated to the monitoring station RW-P789 since 06 March 2014



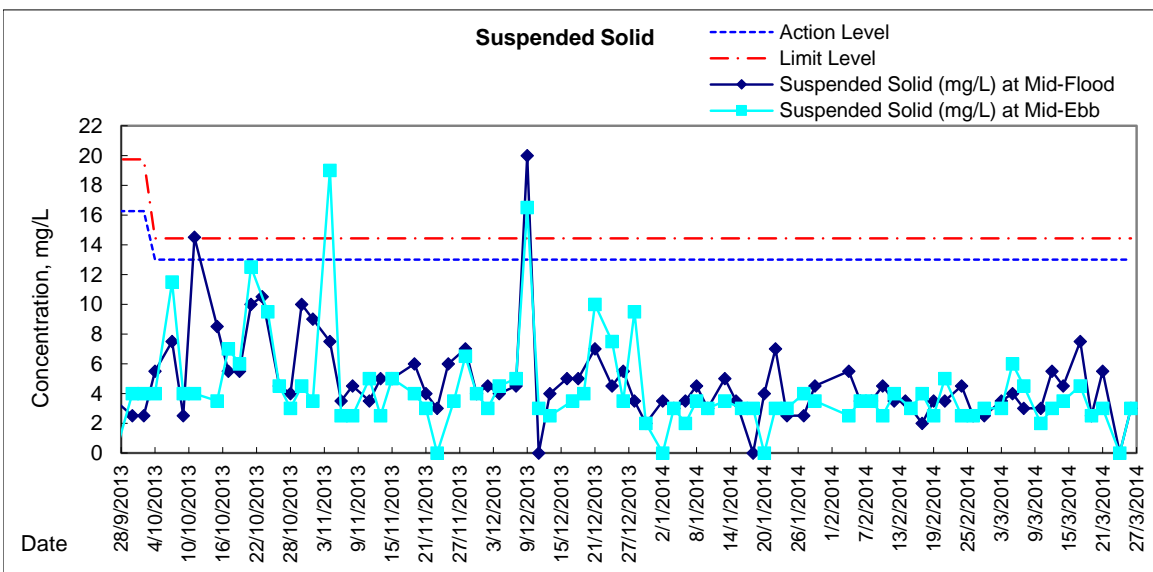
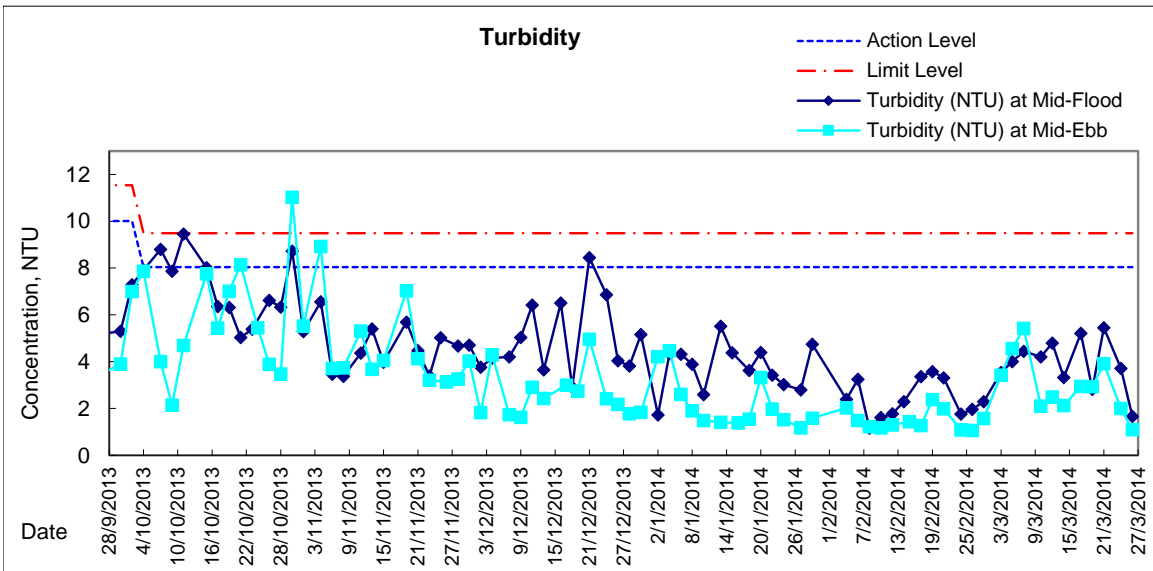
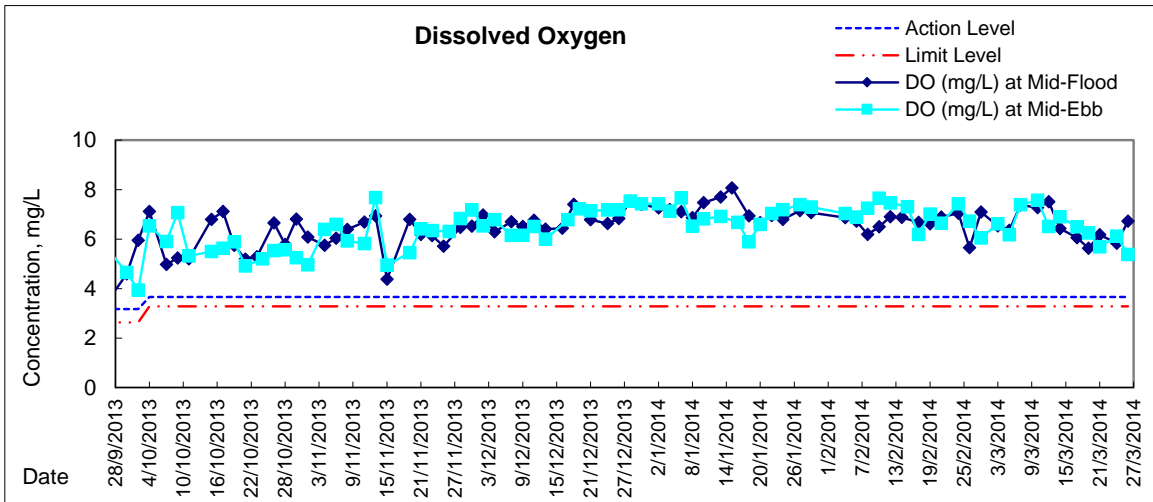
**Water Monitoring Result at WSD19 - Sheung Wan
Mid-Ebb Tide**

Date	Time	Weather Condition	Sampling Depth		Water Temperature			pH			Salinity			DO Saturation		DO		Turbidity		Suspended Solids				
			m		°C		-		ppt		%		mg/L		NTU		mg/L							
					Value	Average	Value	Average	Value	Average	Value	Average	Value	Average	Value	Average	Value	Average						
28/2/2014	12:00	Cloudy	Middle	3.0	17.90	17.90	17.90	8.45	8.45	8.45	35.95	35.95	35.95	85.8	87.0	86.2	6.56	6.65	6.31	3.80	3.80	3	2.50	
	12:02		Middle	3.0	17.90	17.90	17.90	8.45	8.45	8.45	35.95	35.95	35.95	86.7	85.4	86.2	6.00	6.02	6.31	3.80	3.79	3.80	2	2.50
3/3/2014	13:40	Cloudy	Middle	3.0	17.10	17.10	17.05	8.52	8.52	8.52	36.18	36.18	36.18	75.2	75.7	75.4	5.83	5.89	5.86	5.25	5.22	5.23	5	5.00
	13:42		Middle	3.0	17.00	17.00	17.05	8.51	8.51	8.52	36.18	36.18	36.18	75.5	75.2	75.4	5.86	5.84	5.86	5.21	5.22	5.23	5	5.00
5/3/2014	14:45	Cloudy	Middle	2.5	17.50	17.50	17.50	8.46	8.46	8.46	36.03	36.03	36.04	79.8	80.7	80.4	6.15	6.22	6.20	7.24	7.29	7.28	10	9.50
	14:47		Middle	2.5	17.50	17.50	17.50	8.46	8.46	8.46	36.04	36.04	36.04	80.6	80.4	80.4	6.21	6.20	6.20	7.29	7.29	7.28	9	9.50
7/3/2014	14:30	Fine	Middle	3.5	16.60	16.60	16.60	8.13	8.13	8.15	32.65	32.65	32.66	88.6	88.1	88.0	7.03	7.00	6.99	3.88	3.84	3.85	6	5.00
	14:32		Middle	3.5	16.60	16.60	16.60	8.16	8.16	8.15	32.66	32.66	32.66	87.5	87.9	88.0	6.94	6.98	6.99	3.83	3.83	3.85	4	5.00
10/3/2014	21:45	Cloudy	Middle	1.5	15.80	15.80	15.80	7.92	7.92	7.92	35.09	35.09	35.09	62.1	62.1	61.9	4.97	4.97	4.96	3.68	3.70	3.66	4	4.00
	21:46		Middle	1.5	15.80	15.80	15.80	7.91	7.91	7.92	35.09	35.09	35.09	61.8	61.7	61.9	4.95	4.94	4.96	3.61	3.66	3.66	4	4.00
12/3/2014	1:26	Cloudy	Middle	1.5	17.50	17.50	17.55	8.22	8.22	8.22	32.81	32.81	32.80	80.0	80.5	80.2	6.26	6.31	6.28	5.50	5.52	5.50	7	6.50
	1:27		Middle	1.5	17.60	17.60	17.55	8.21	8.21	8.22	32.79	32.79	32.80	80.3	80.0	80.2	6.29	6.26	6.28	5.47	5.49	5.50	6	6.50
14/3/2014	2:20	Cloudy	Middle	1.5	16.10	16.10	16.10	8.15	8.15	8.15	32.65	32.65	32.66	76.9	77.8	77.8	6.22	6.29	6.29	5.15	5.09	5.18	5	5.50
	2:21		Middle	1.5	16.10	16.10	16.10	8.14	8.14	8.15	32.66	32.66	32.66	78.3	78.2	77.8	6.34	6.32	6.29	5.44	5.05	5.18	6	5.50
17/3/2014	12:02	Fine	Middle	3.0	18.60	18.60	18.70	7.97	7.97	7.97	35.78	35.78	35.78	79.0	79.7	79.3	5.95	6.00	5.97	5.17	5.20	5.20	7	6.00
	12:04		Middle	3.0	18.80	18.80	18.70	7.96	7.96	7.97	35.78	35.78	35.78	79.6	79.0	79.3	5.99	5.94	5.97	5.20	5.21	5.20	5	6.00
19/3/2014	13:50	Fine	Middle	3.0	21.60	21.60	21.75	7.97	7.97	7.96	35.63	35.63	35.65	78.2	77.8	77.5	5.58	5.56	5.54	9.33	9.41	9.40	12	12.00
	13:52		Middle	3.0	21.90	21.90	21.75	7.95	7.95	7.96	35.67	35.67	35.65	76.8	77.3	77.5	5.48	5.52	5.54	9.42	9.43	9.40	12	12.00
21/3/2014	14:00	Fine	Middle	3.0	17.80	17.80	17.80	8.10	8.10	8.09	35.46	35.46	35.40	67.2	67.4	66.9	5.34	5.19	5.19	4.08	4.03	4.03	5	4.50
	14:02		Middle	3.0	17.80	17.80	17.80	8.07	8.07	8.09	35.33	35.33	35.40	66.8	66.2	66.9	5.13	5.08	5.19	4.00	3.99	4.03	4	4.50
24/3/2014	20:45	Cloudy	Middle	2.0	18.40	18.40	18.40	7.77	7.78	7.77	34.85	34.85	35.12	69.9	73.8	72.8	6.48	5.62	5.83	6.40	6.10	6.23	6	7.00
	20:46		Middle	2.0	18.40	18.40	18.40	7.77	7.77	7.77	35.39	35.39	35.12	73.7	73.7	72.8	5.60	5.60	5.83	6.21	6.22	6.23	8	7.00
26/3/2014	21:35	Fine	Middle	2.0	19.80	19.80	19.88	7.95	7.95	7.95	34.47	34.47	34.64	73.6	73.1	73.0	6.18	6.16	5.90	3.63	3.24	3.36	6	6.00
	21:36		Middle	2.0	20.00	19.90	19.88	7.95	7.95	7.95	34.58	35.03	34.64	71.7	73.6	73.0	5.62	5.64	5.90	3.26	3.29	3.36	6	6.00

Remarks:
Single underline denotes exceedance over Action Level.
Double underline denotes exceedance over Limit Level.

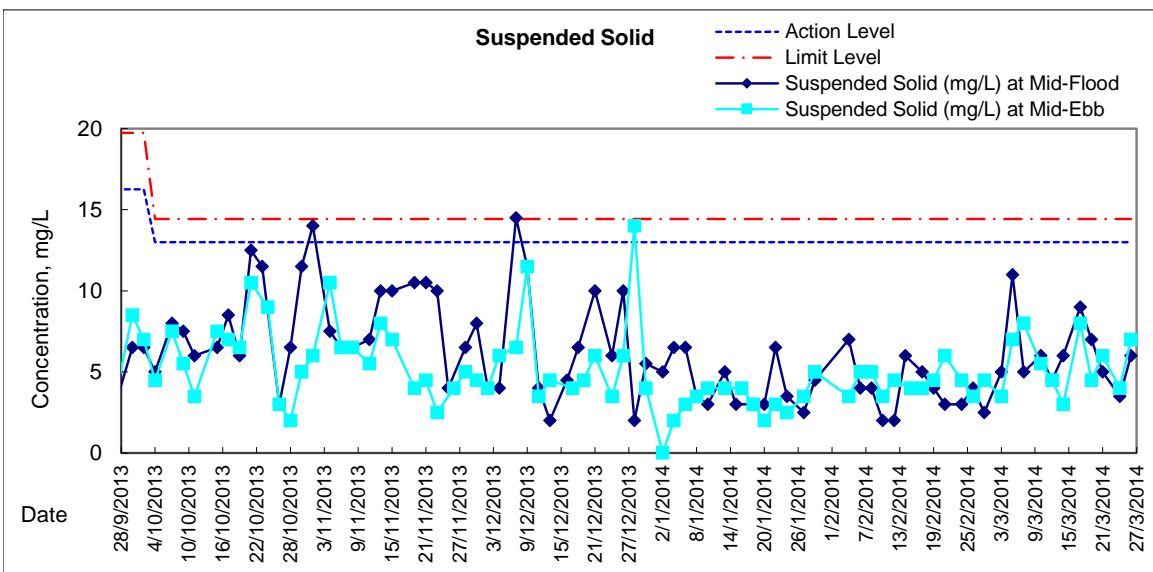
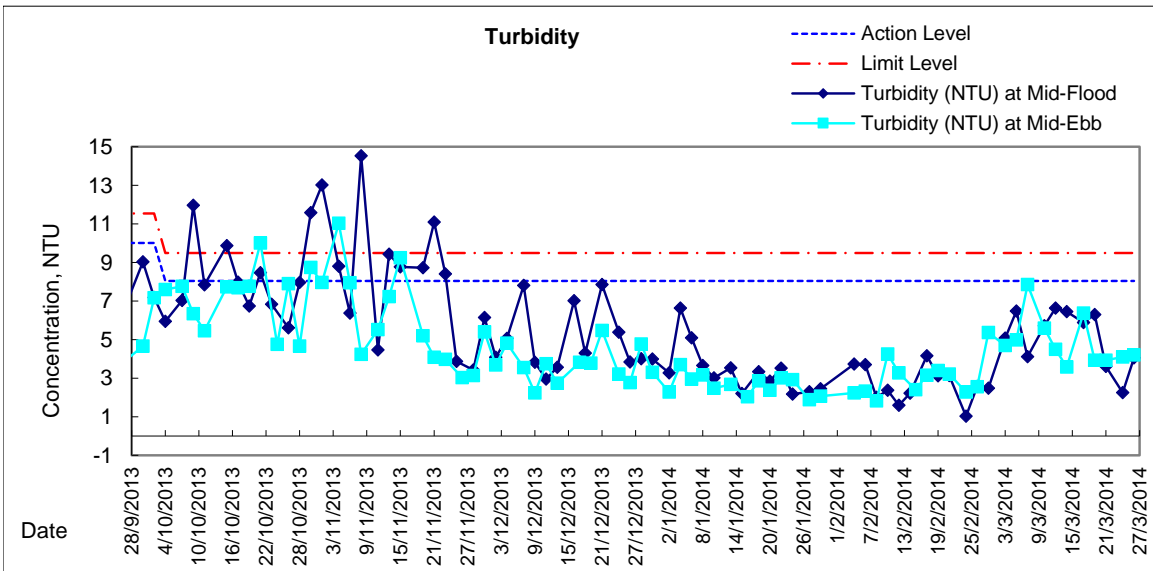
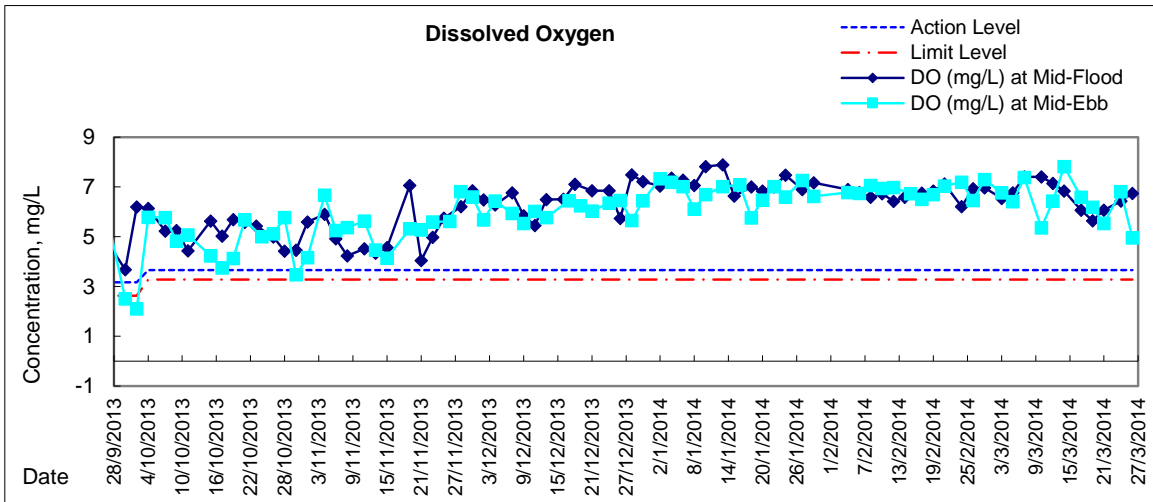


Graphic Presentation of Water Quality Result of WSD9 - Tai Wan



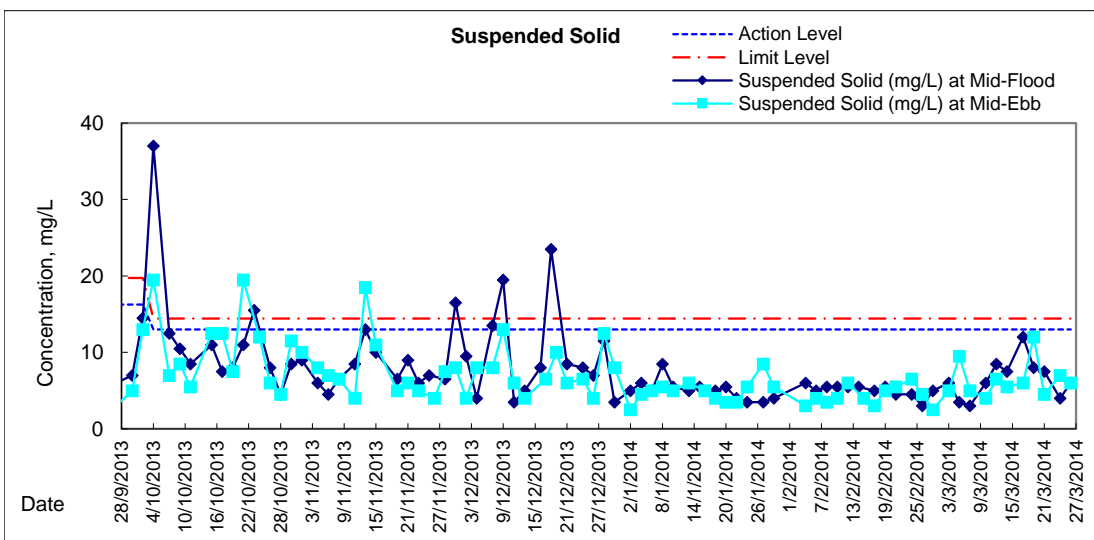
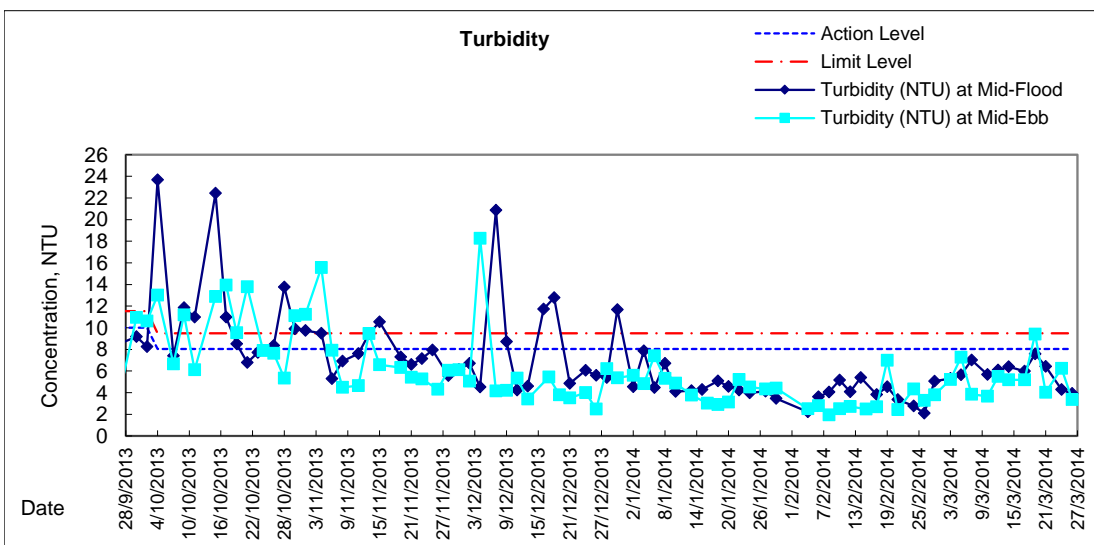
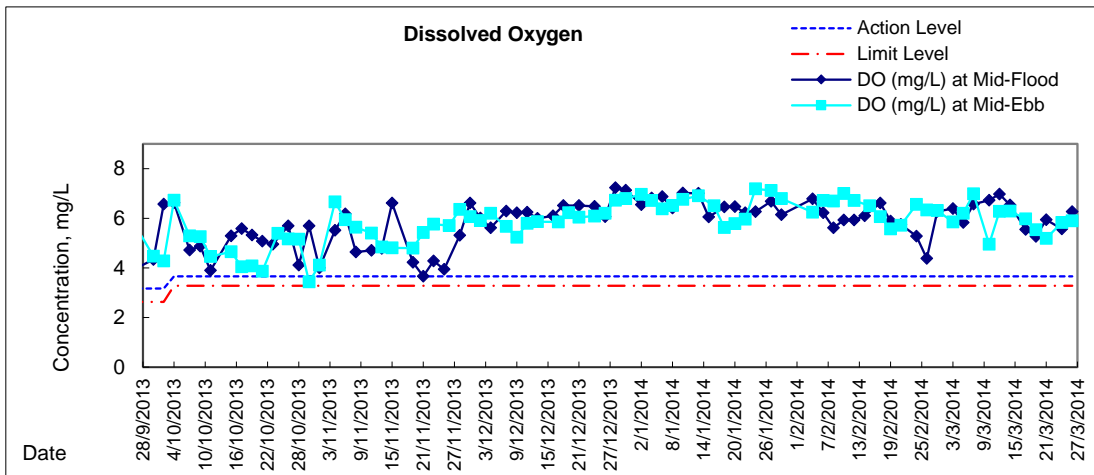


Graphic Presentation of Water Quality Result of WSD17 - Quarry Bay



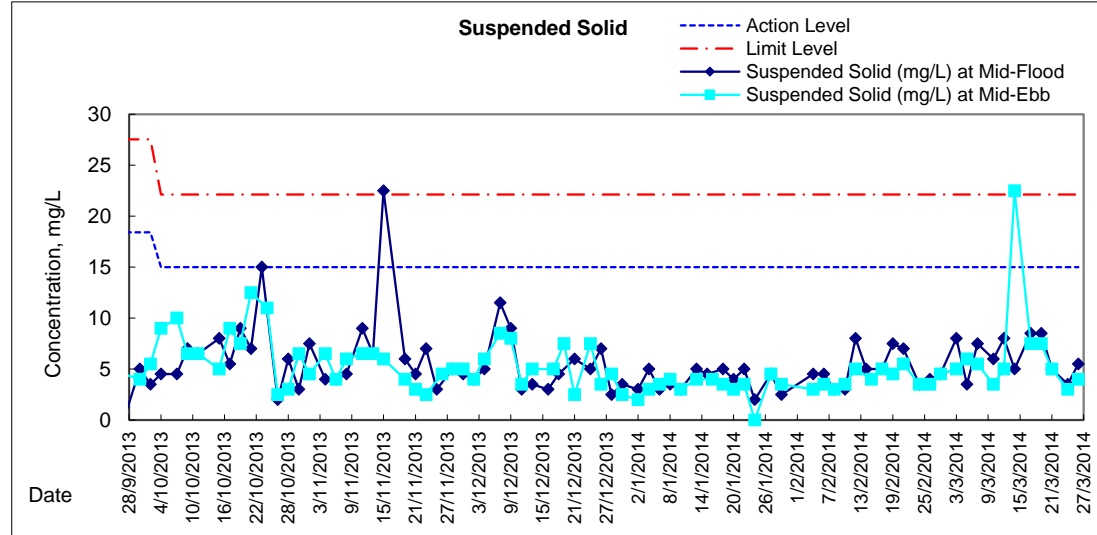
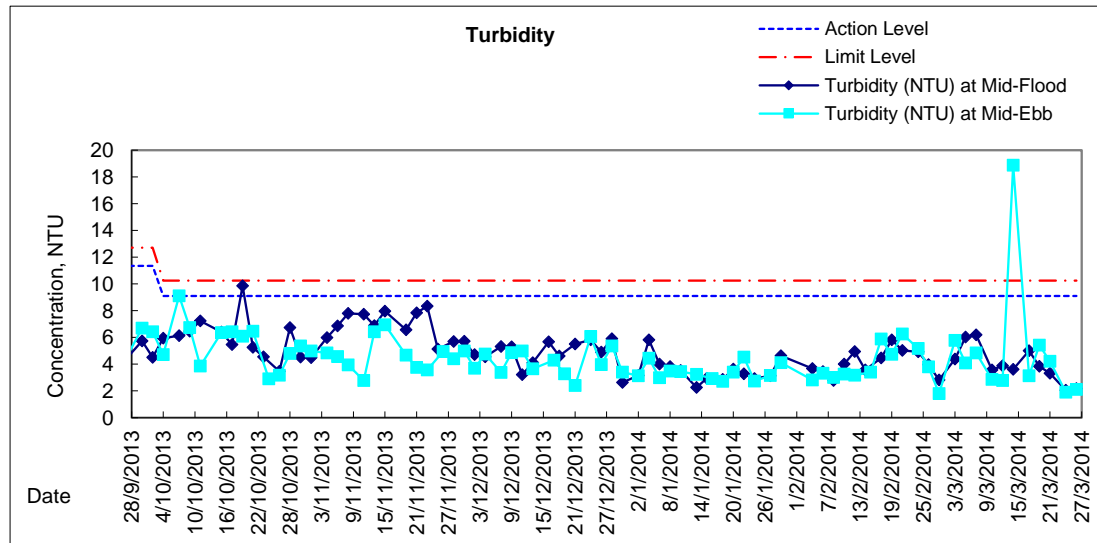
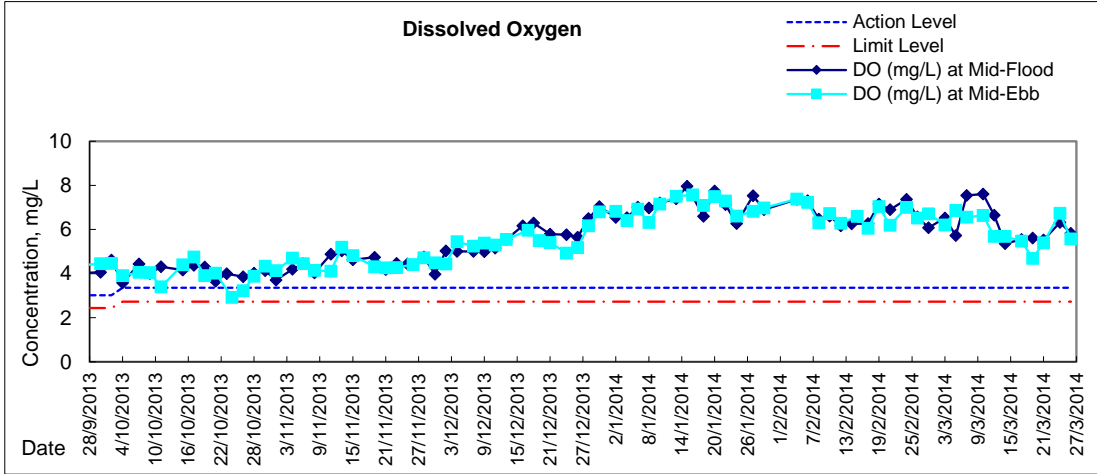


Graphic Presentation of Water Quality Result of WSD19 - Sheung Wan



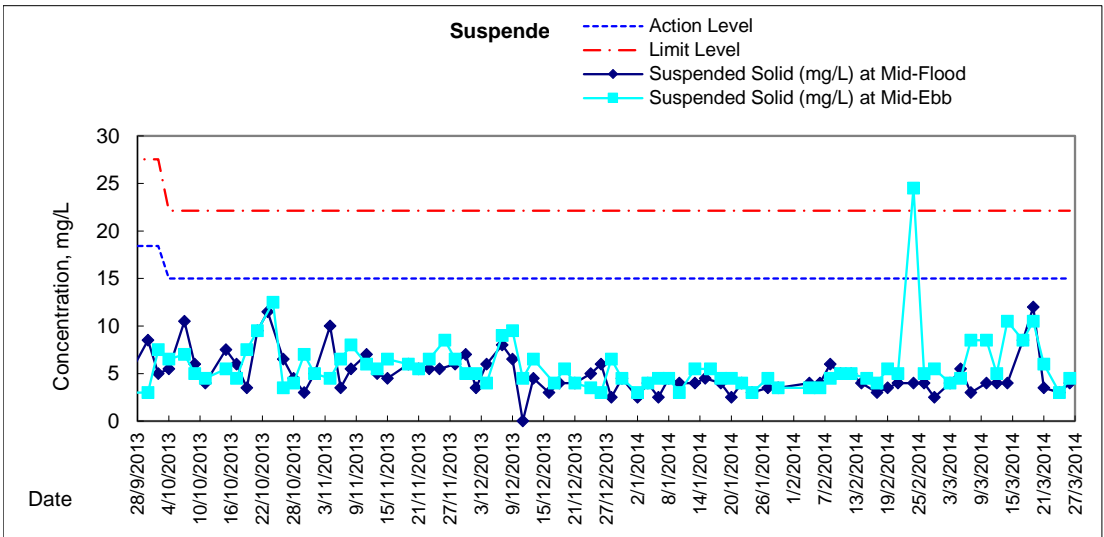
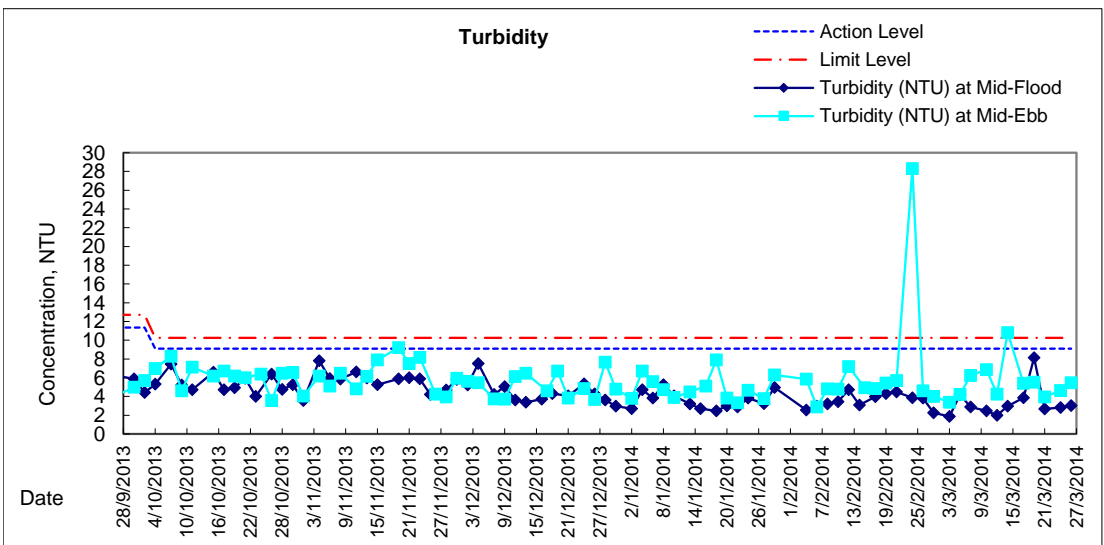
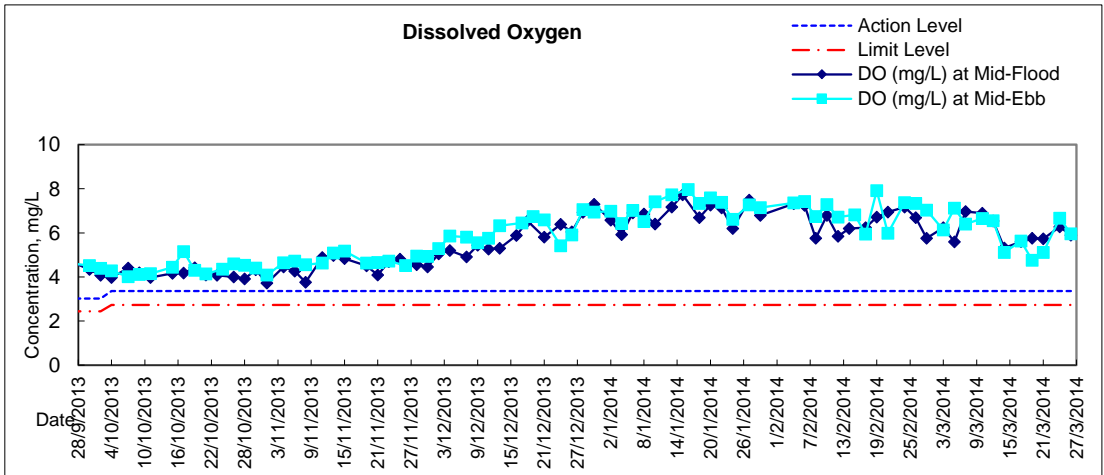


Graphic Presentation of Water Quality Result of C1 - HKCEC



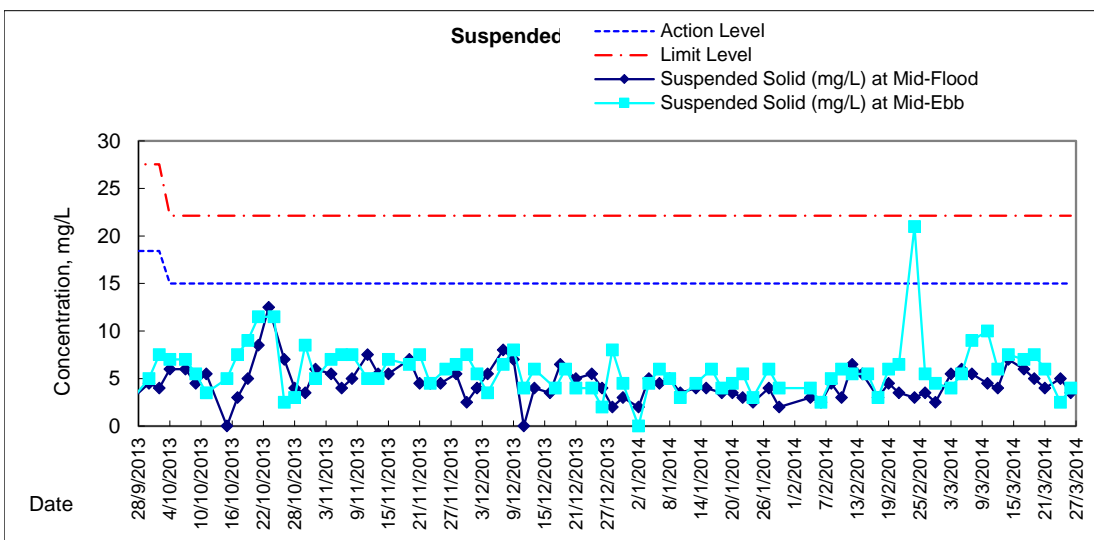
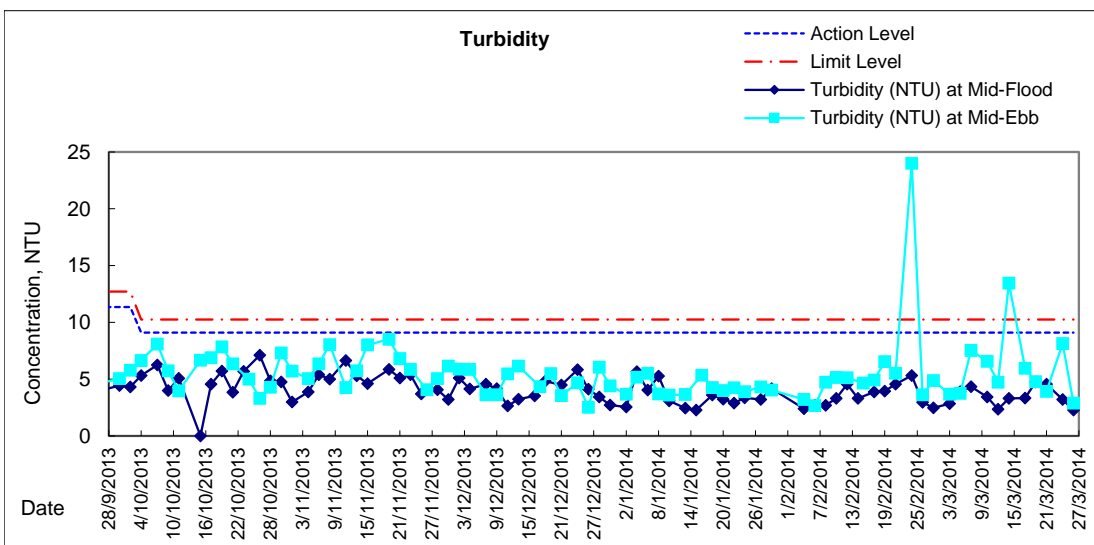
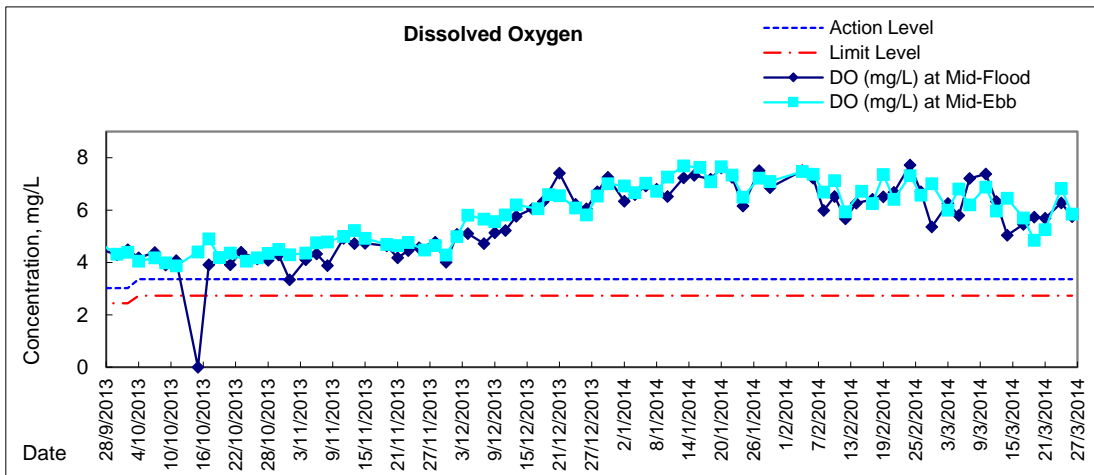


Graphic Presentation of Water Quality Result of P1 - HKCEC Phase I



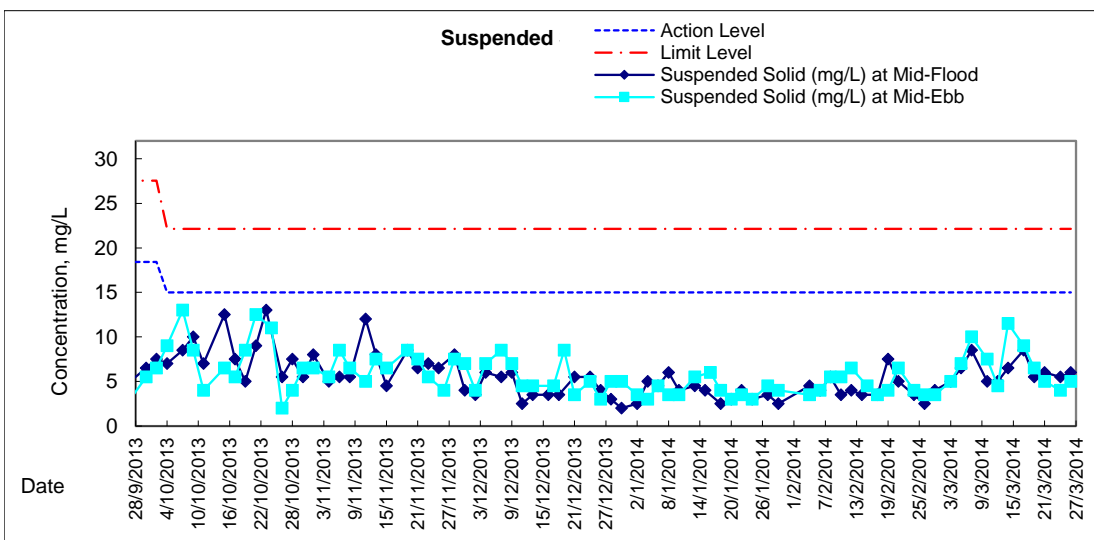
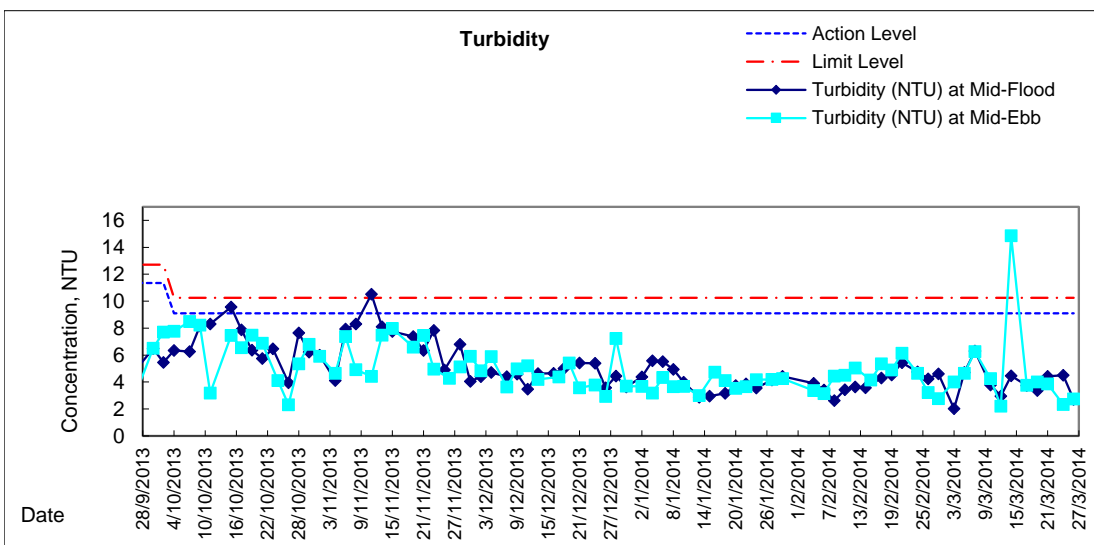
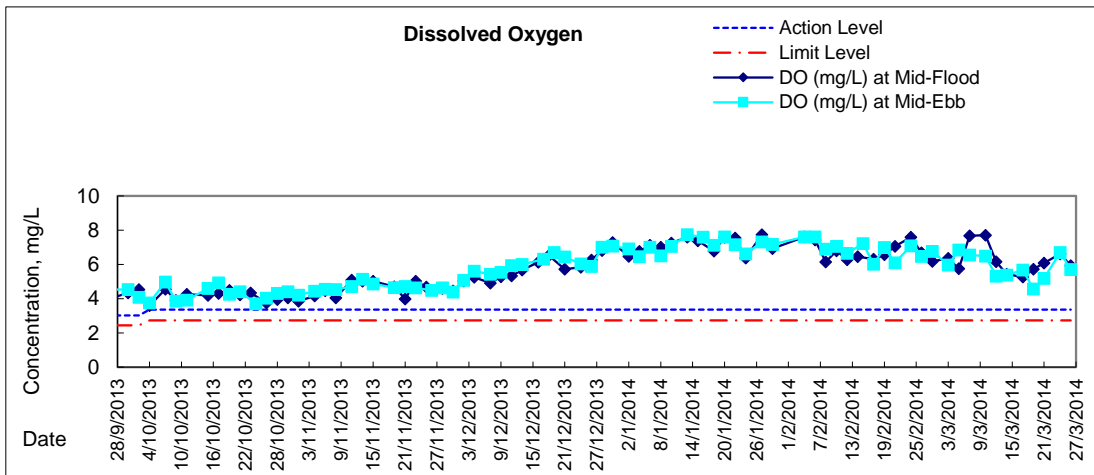


Graphic Presentation of Water Quality Result of P3 - APA



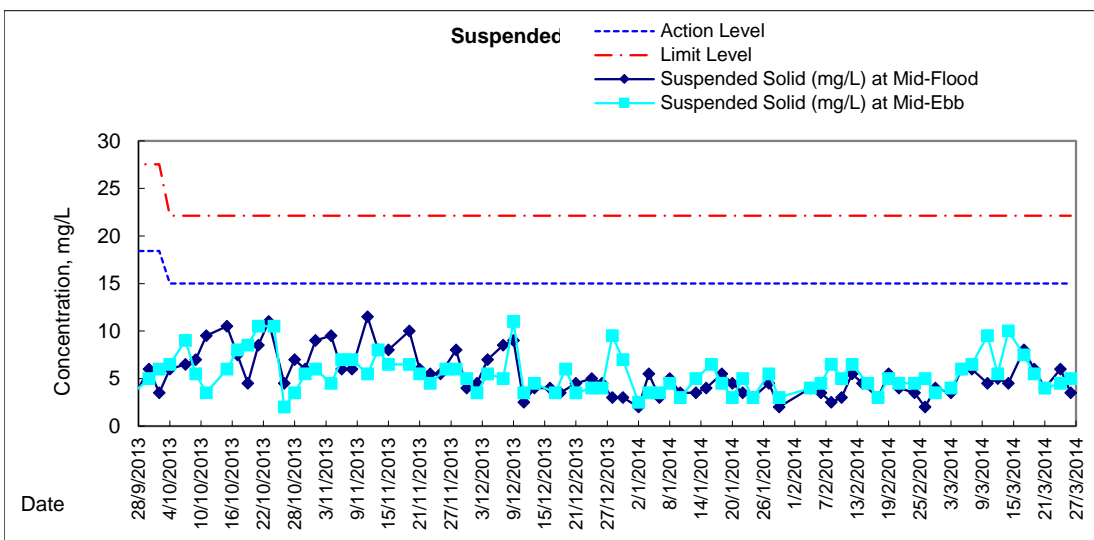
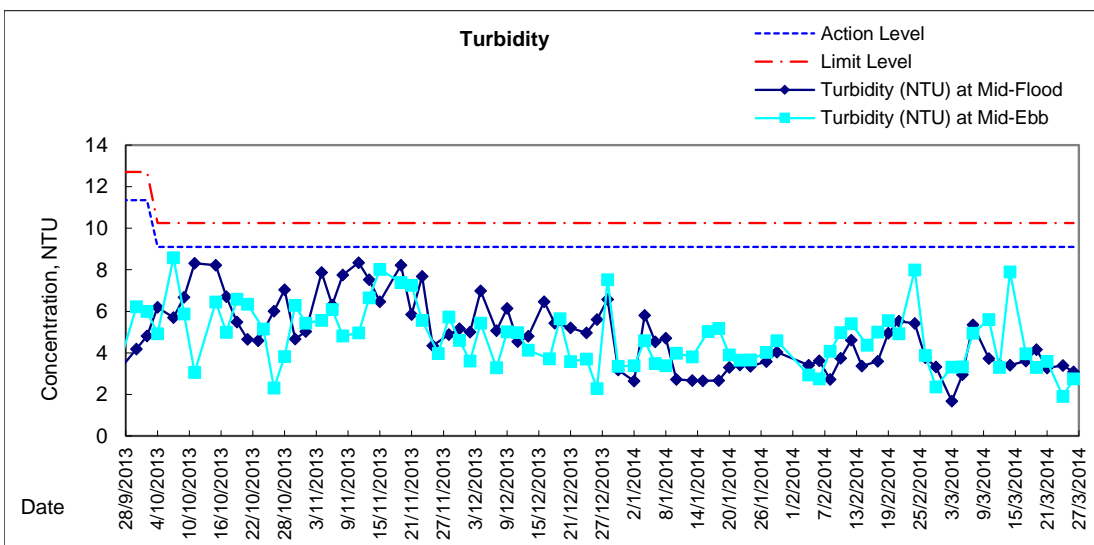
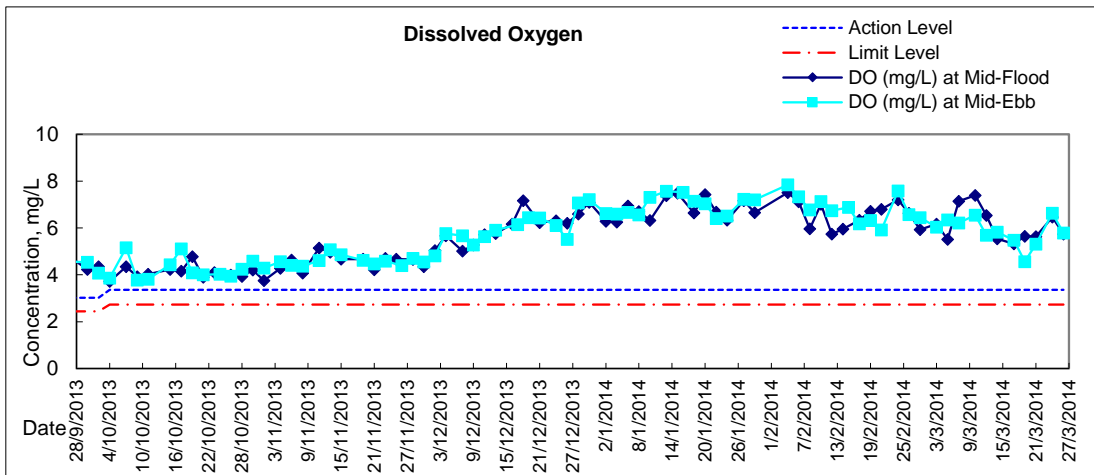


Graphic Presentation of Water Quality Result of P4 - SOC



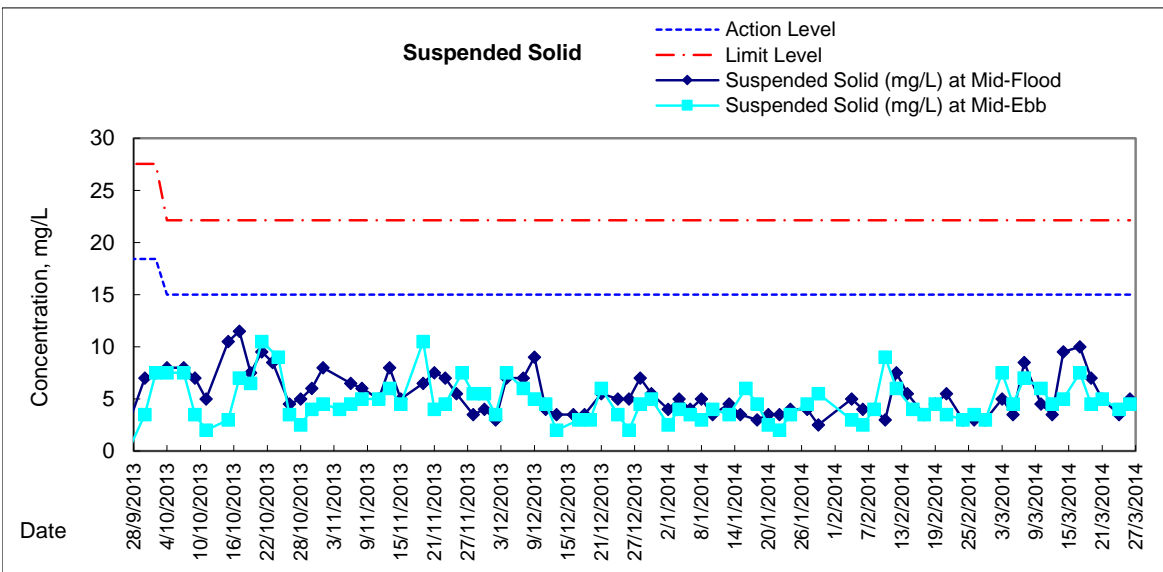
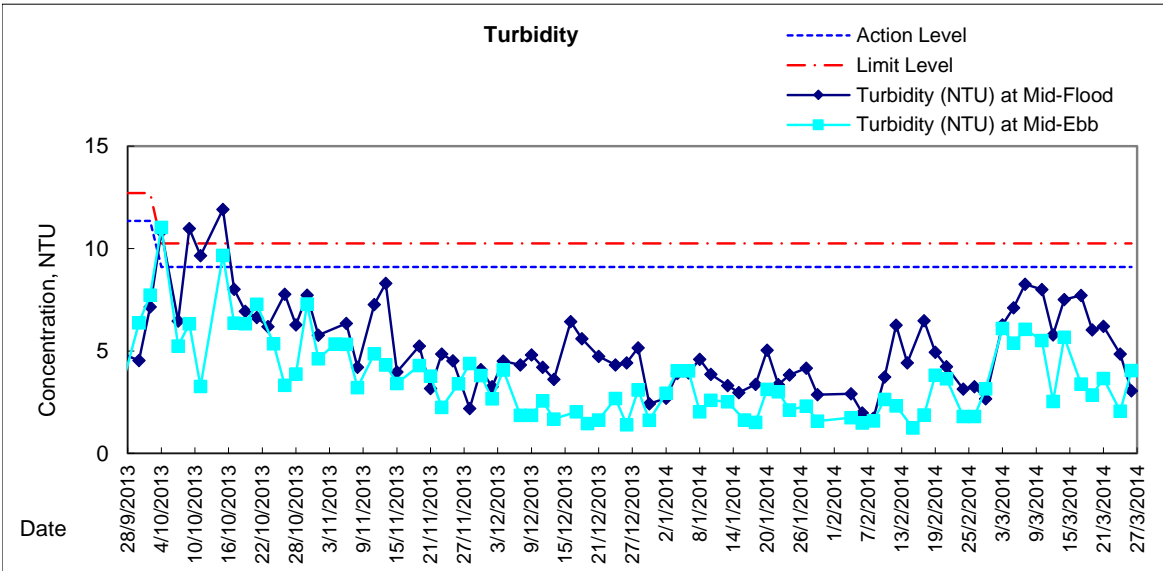
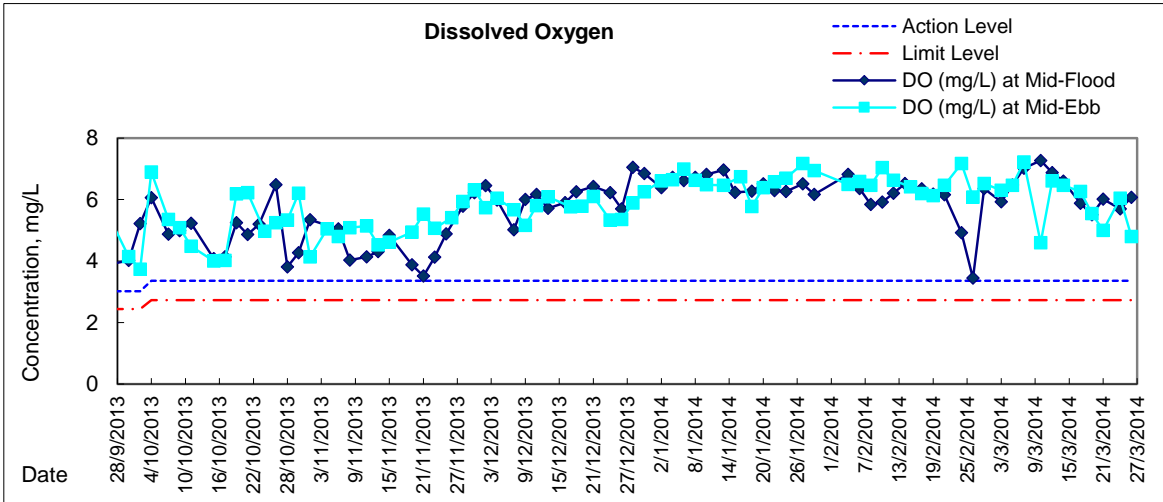


Graphic Presentation of Water Quality Result of P5 - WCT / RT / IT



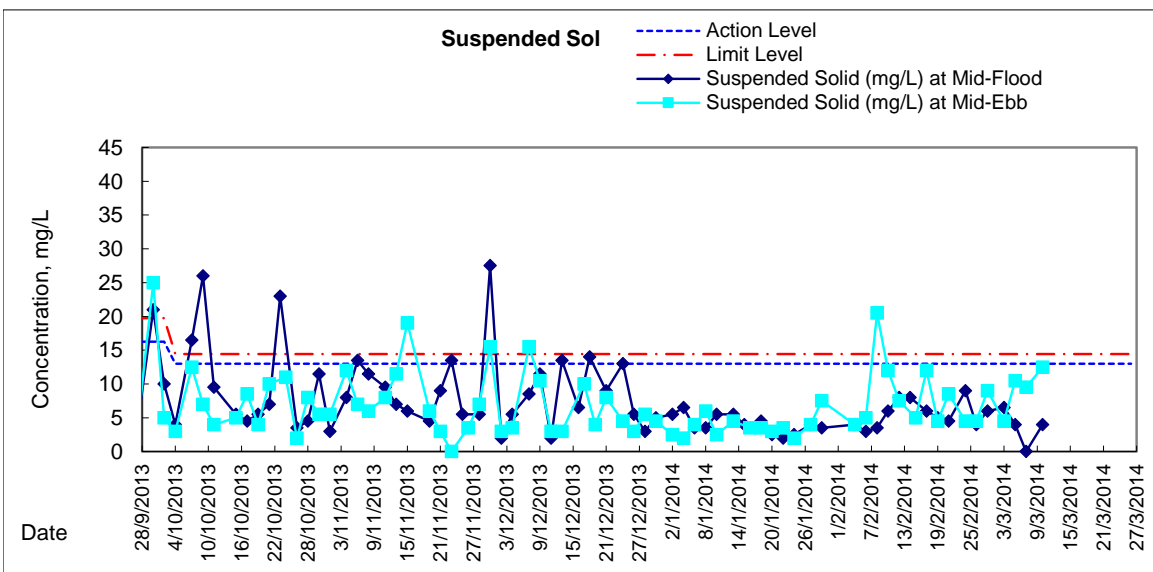
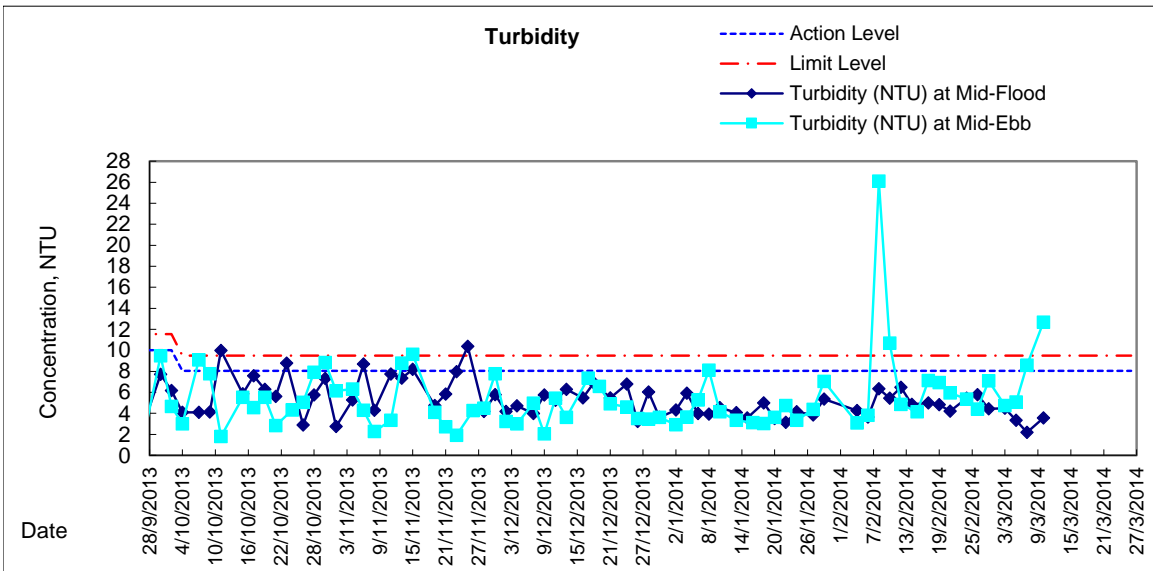
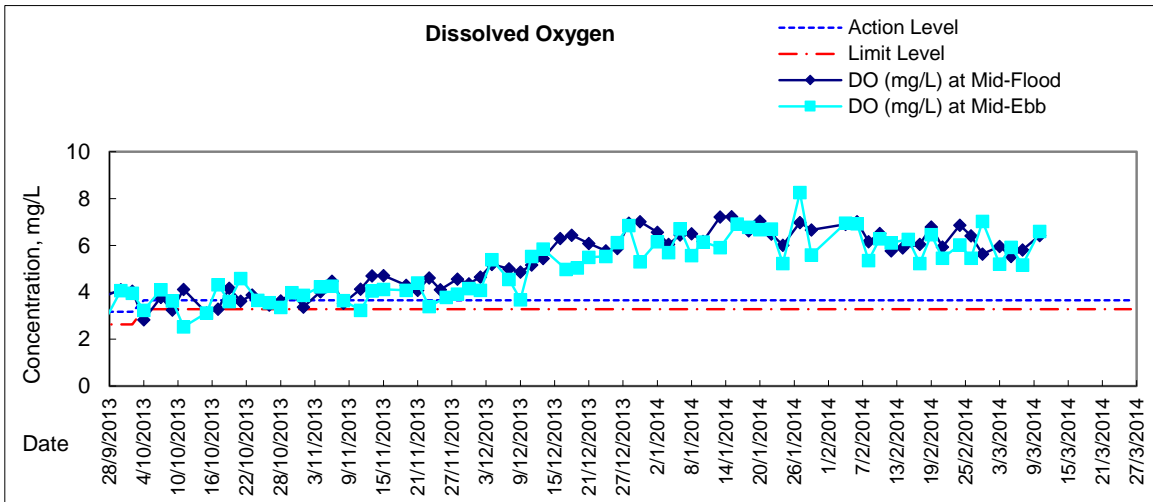


Graphic Presentation of Water Quality Result of RW21-P789 - GEC/CRC/SHK



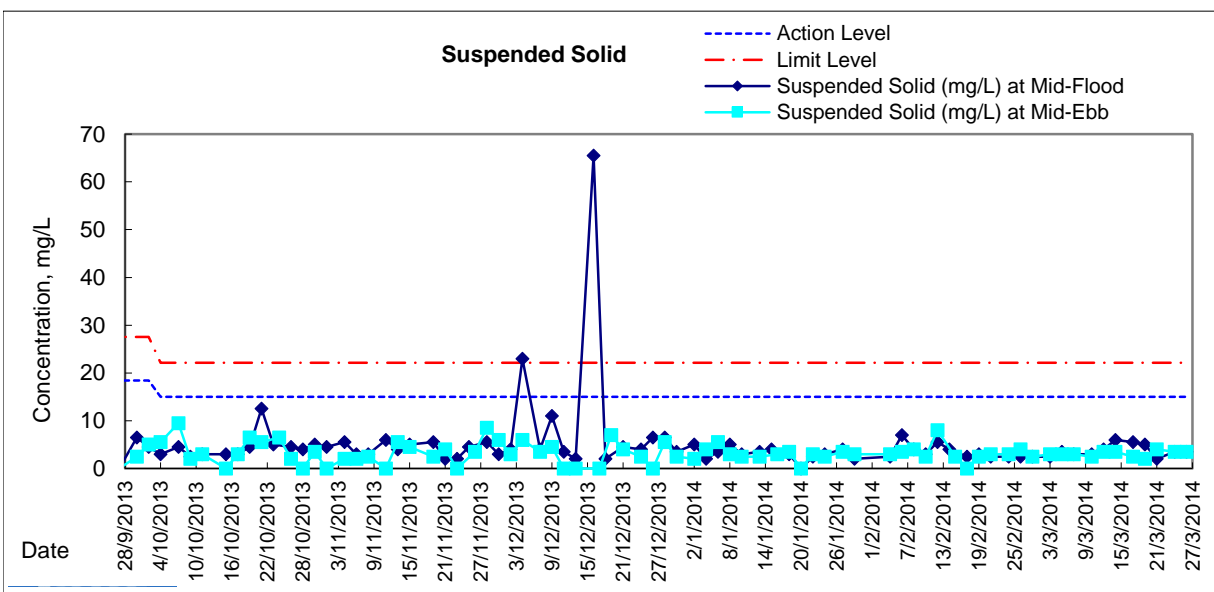
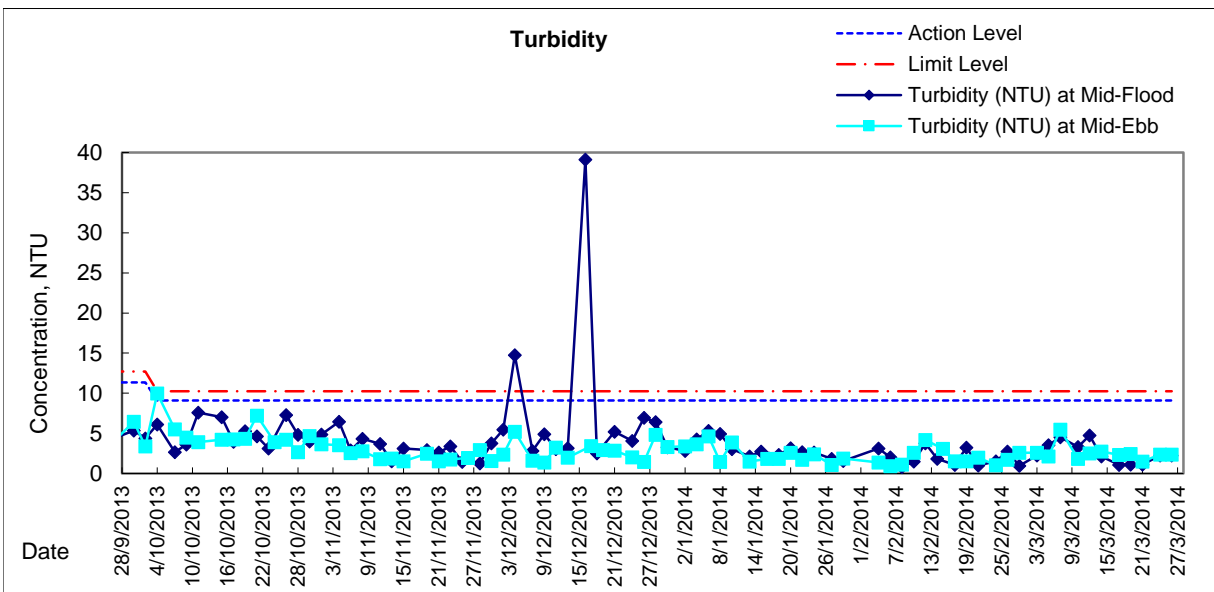
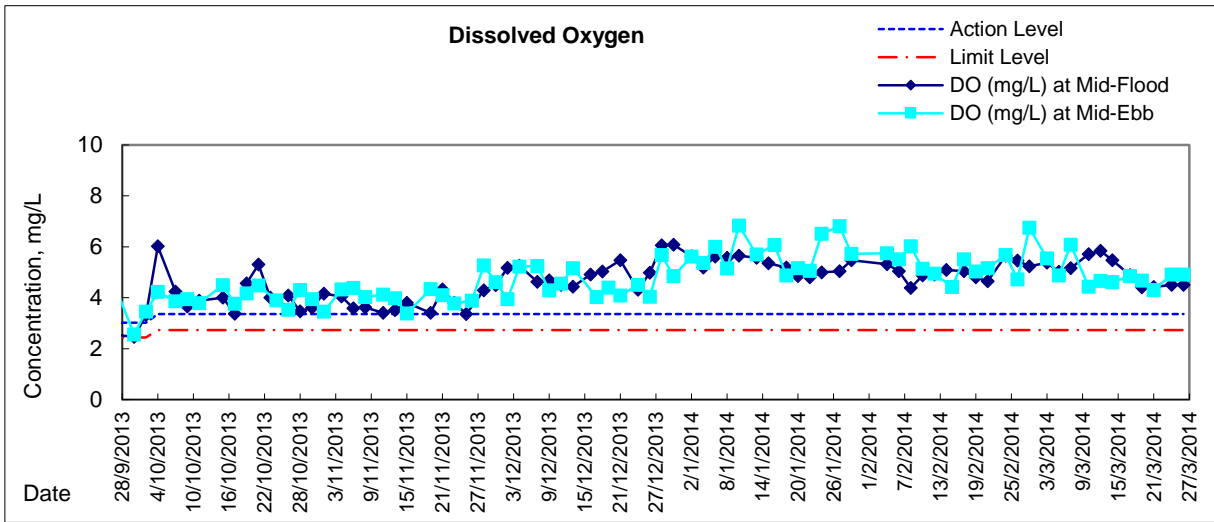


Graphic Presentation of Water Quality Result of WSD21 - Wan Chai



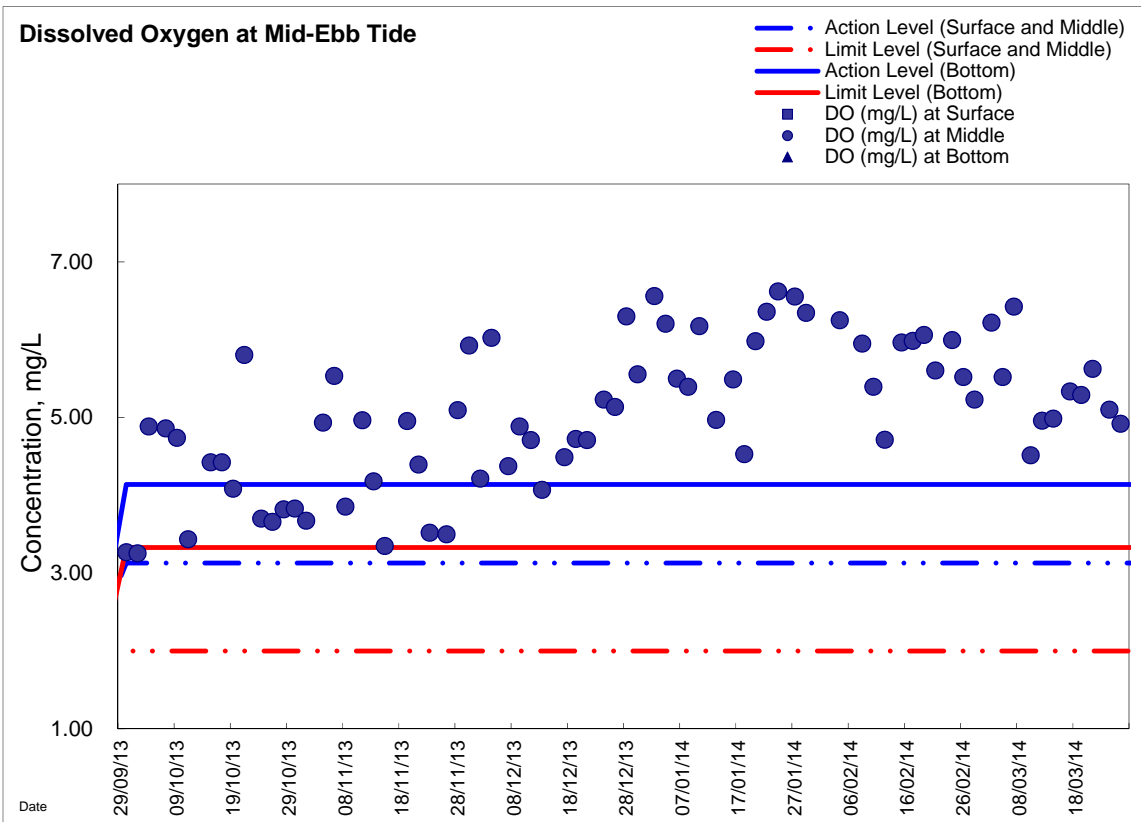
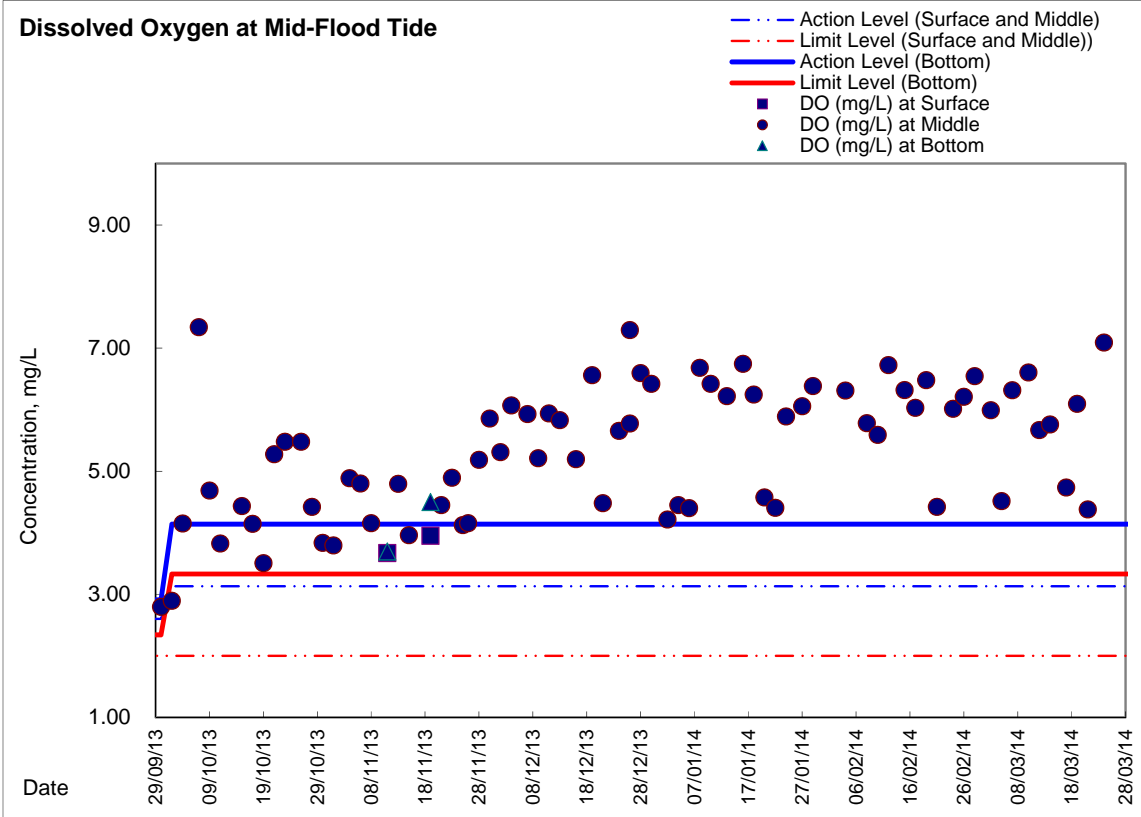


Graphic Presentation of Water Quality Result of C7 - Windsor House



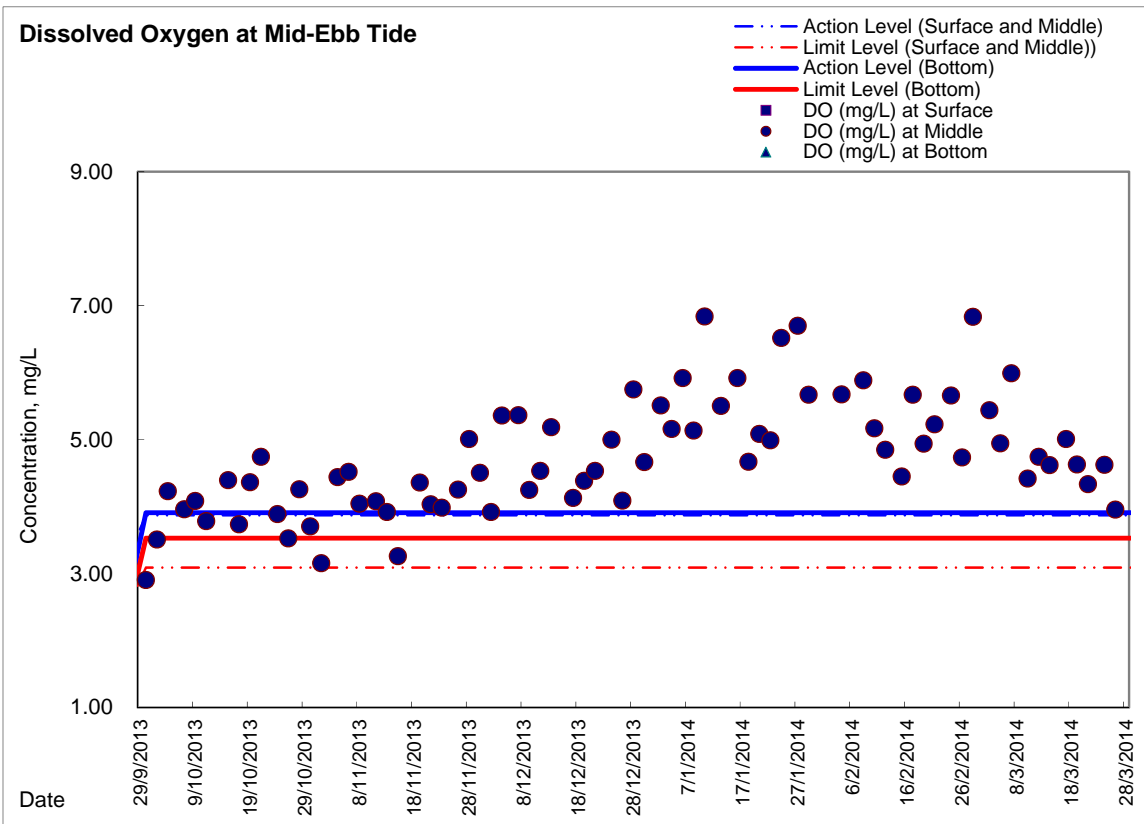
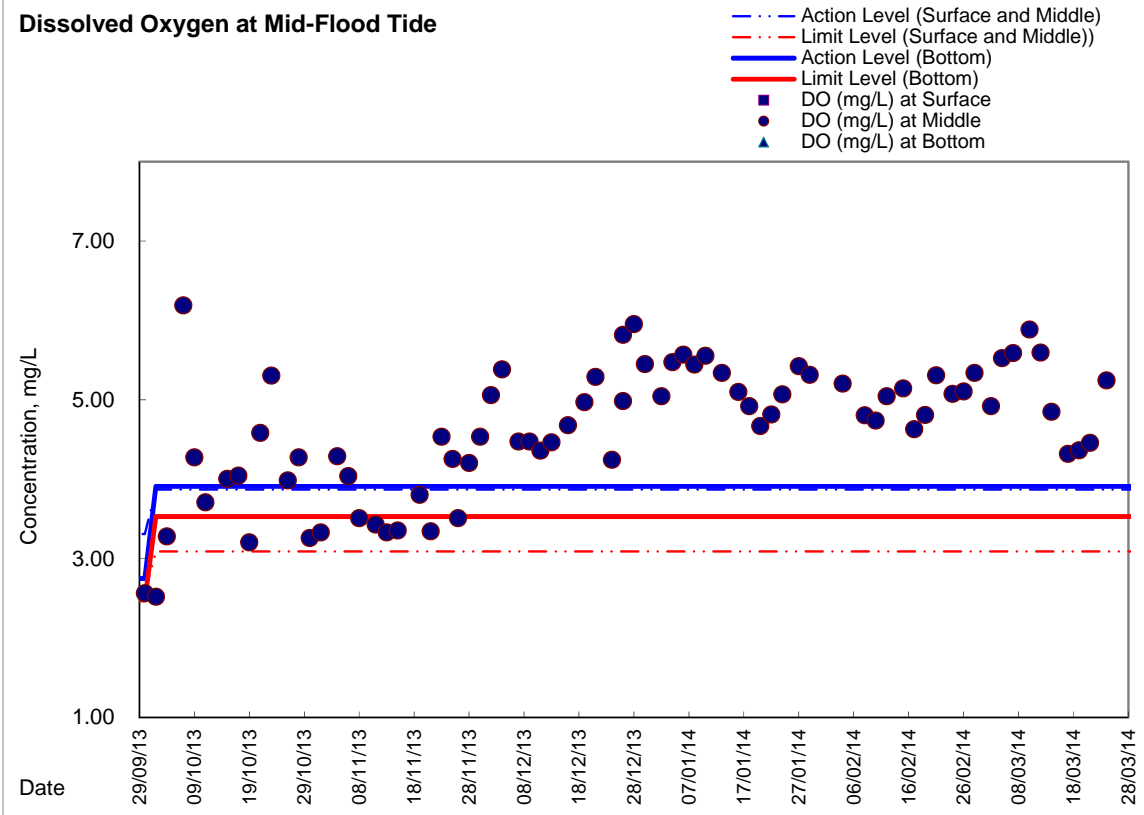


Graphic Presentation of Enhanced Water Monitoring Results (DO) at C6 - Excelsior Hotel



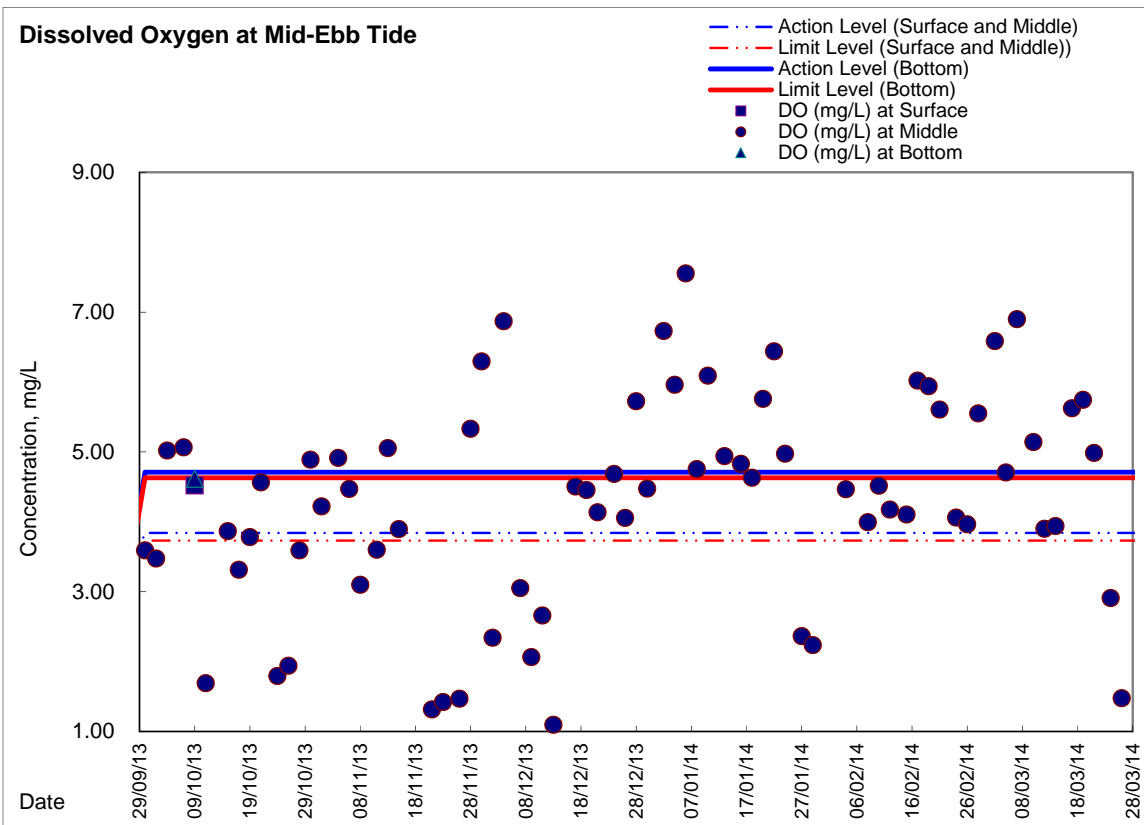
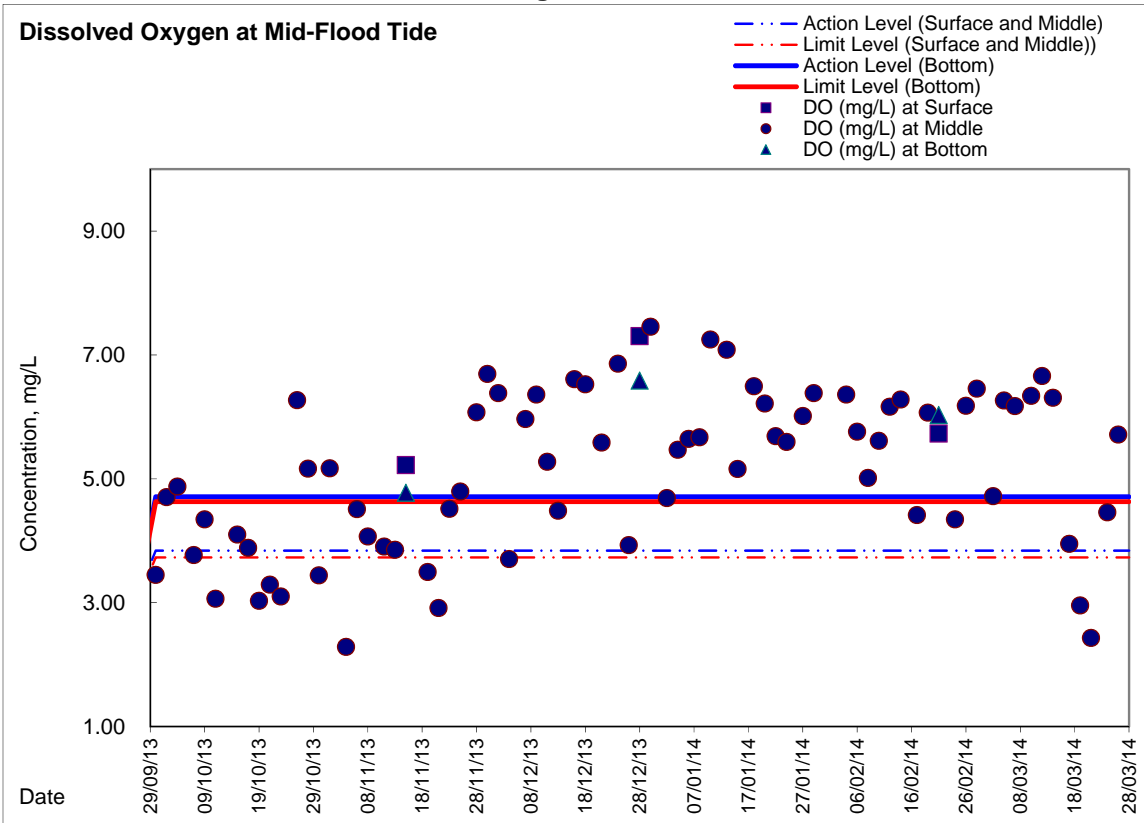


Graphic Presentation of Enhanced Water Monitoring Results (DO) at C7 - Windsor House





Graphic Presentation of Enhanced Water Monitoring Results (DO) at Ex-WPCWA SW - South-western corners of ex-Public Cargo Works Area





Graphic Presentation of Enhanced Water Monitoring Results (DO) at Ex-WPCWA SE - South-eastern corners of ex-Public Cargo Works Area

